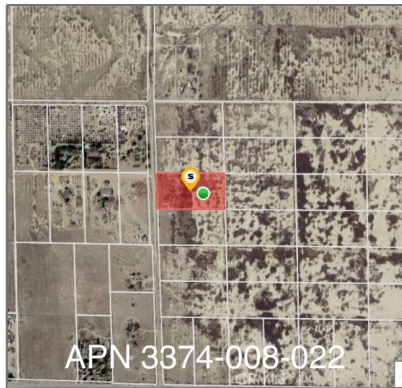


# Land For Sale

- 0 Vac/100 Ste/Vic Avenue G10, Lancaster,  
California, 93535



## Basic [Details](#)

Status: **Active**

Listing Type: **For Sale**

Property Type: **Land**

Property SubType: **Single Family Residence**

Price: **\$60,000**

Price Per Square Foot: **\$0**

Lot Area: **5.02 Sqft**

View: **Mountain(s)**

Bathrooms: **1**

Country: **US**

State: **California**

County: **Los Angeles**

City: **Lancaster**

Zipcode: **93535**

Listing ID: **IG24217929**

## Features

Association: **0**

Senior Community: **0**

✓ Common Walls: **1 Common Wall**

Stories: **1**

✓ Community Features: **Rural**

✓ Amenities: **Maintenance Grounds, Pets Permitted, Trash, Maintenance Front Yard**

AttachedGarage: **1**

:

✓ Parking: **Driveway, Paved, Garage Door Opener, Garage, Parking Space, Concrete, Private, Assigned, On Site, Garage Faces Front, Driveway Up Slope From Street, Tandem Uncovered, Shared Driveway**

Spa: **0**

✓ Lot Features: **Lot Over 40000 Sqft**

Entry Level: **1**

✓ Laundry: **Electric Dryer Hookup,**

		Washer Hookup, Stackable, In Kitchen, In Closet
✓	Flooring:	Wood
✓	Window Features:	Double Pane Windows
✓	Entry Location	
✓	Property Condition:	Turnkey
✓	Foundation Details:	Slab
✓	Interior Features:	Built-in Features, Open Floorplan, Pantry, Recessed Lighting, Beamed Ceilings, Copper Plumbing Full, Furnished

Main Level
Bathrooms:
1

Main Level Bedrooms:	2
✓ Appliances:	Dishwasher, Energy Star Qualified Water Heater, Gas Range, Microwave, Refrigerator, Tankless Water Heater, Gas Oven, Self Cleaning Oven, Convection Oven, Gas Cooktop, Water Line To Refrigerator, Vented Exhaust Fan, Ice Maker, Energy Star Qualified Appliances

MLS [Addon](#)

Zoning:	LCA21*
Parcel Number:	3374008022
Lot Size Square Feet:	218,456 Sqft
TaxAnnualAmount:	\$0
TaxYear:	0
✓ RoomKitchenFeatures:	Pots & Pan Drawers
✓ RoomBathroomFeatures:	Shower, Walk-in Shower, Remodeled, Vanity Area, Low Flow Toilet(s), Main

Floor Full Bath

High School: **Newport Harbor**

High School 2: **Newhar**

Middle Or Junior School: **Talbert**

Elementary School: **Horace Mann**

High School District: **Newport Mesa Unified**

Levels: **One**

✓ EatingArea: [Area, In Family Room](#)

Taxes: **\$0**

Guest House SqFt: **0 Sqft**

Approx Lot SqFt: **0 Sqft**

✓ Special Listing Conditions: [Standard](#)

Agent [Info](#)



Rina Maya

☎ 858-876-7946

☎ 800-878-0907

✉ [Questions@unitedbrokersinc.net](mailto:Questions@unitedbrokersinc.net)