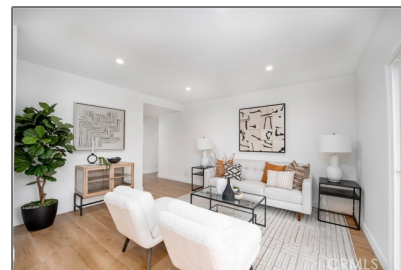
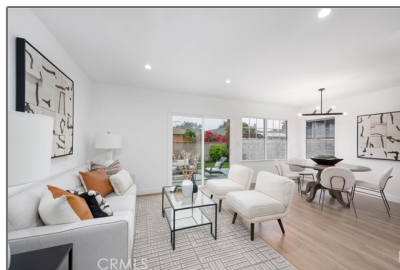


# Residential For Sale

1,370 Sqft - 13315 GramercyPlace, Gardena,  
California, 90249



## Basic Details

Status:	<b>Active</b>
Listing Type:	<b>For Sale</b>
Property Type:	<b>Residential</b>
Property SubType:	<b>Single Family Residence</b>
Price:	<b>\$899,900</b>
Price Per Square Foot:	<b>\$657</b>
Square Footage:	<b>1,370 Sqft</b>
Lot Area:	<b>0.13 Sqft</b>
Year Built:	<b>1956</b>
View:	<b>Mountain(s)</b>
Bedrooms:	<b>4</b>
Bathrooms:	<b>2</b>
Bathrooms (Full):	<b>2</b>
Country:	<b>US</b>
State:	<b>California</b>
County:	<b>Los Angeles</b>
City:	<b>Gardena</b>
Zipcode:	<b>90249</b>
Listing ID:	<b>WS24215826</b>

## Features

Association:	<b>0</b>
Senior Community:	<b>0</b>
✓ Common Walls:	<b>No Common Walls</b>
Stories:	<b>1</b>
✓ Community Features:	<b>Sidewalks, Street Lights</b>
AttachedGarage :	<b>1</b>
✓ Parking:	<b>2.00</b>
✓ Parking:	<b>Driveway, Garage</b>
Spa:	<b>0</b>
✓ Lot Features:	<b>Back Yard, Front Yard, 0-1 Unit/acre, Landscaped, Lawn</b>
✓ Security:	<b>Carbon monoxide detector(s), Smoke Detector(s)</b>
✓ Inclusions:	<b>Refrigerator, Range, Microwave, Dishwasher</b>
Entry Level:	<b>1</b>
✓ Laundry:	<b>Inside, Washer Hookup, Gas &amp; Electric Dryer Hookup</b>
✓ Room Type:	

Living Room, Kitchen, All  
Bedrooms Down, Primary  
Bathroom, Primary  
Bedroom

- ✓ Flooring: Laminate
- ✓ Entry Location: Front Door
- ✓ Property Condition: Turnkey,  
Updated/remodeled
- ✓ Interior Features: Recessed Lighting,  
Quartz Counters

Main Level Bathrooms: **2**

Main Level Bedrooms: **4**

- ✓ Heating System: Central
- ✓ Cooling System: Central Air
- ✓ Water Source: Public
- ✓ Sewer: Public Sewer
- ✓ Appliances: Dishwasher, Disposal,  
Gas Range, Microwave,  
Refrigerator, Water  
Heater

## MLS Addon

Zoning: **GAR1**

Parcel Number: **4061020024**

Lot Size Square Feet: **5,599**

✓ Exclusions: All Staging Furniture

TaxAnnualAmount: **\$0**

✓ RoomKitchenFeatures: Quartz Counters,  
Remodeled Kitchen

✓ RoomBathroomFeatures: Walk-in Shower,  
Remodeled, Upgraded,  
Shower In Tub

Garage Spaces: **2**

High School: **Arlington**

High School 2: **Arling**

Middle Or Junior School: **Miller**

High School District: **Los Angeles Unified**

Levels: **One**

EatingArea: **Separated**

Taxes: **\$0**

Guest House SqFt: **0**

Approx Lot SqFt: **0**


Special Listing Conditions: **Standard**


## Agent [Info](#)


---



Rina Maya

 858-876-7946

 800-878-0907

 [Questions@unitedbrokersinc.net](mailto:Questions@unitedbrokersinc.net)

---