

Manufactured In Park For Sale

1,440 Sqft - 22111 Newport Avenue, Riverside, California, 92313



Basic Details

Status: **Active**

Listing Type: **For Sale**

Property Type: **Manufactured In Park**

Price: **\$180,000**

Price Per Square Foot: **\$125**

Square Footage: **1,440 Sqft**

Lot Area: **0.09 Sqft**

Year Built: **1977**

View: **Mountain(s)**

Bedrooms: **3**

Bathrooms: **2**

Bathrooms (Full): **2**

Country: **US**

State: **California**

County: **Riverside**

City: **Riverside**

Zipcode: **92313**

Listing ID: **CV24183449**

Features

Association: **1**

Senior Community: **0**

Stories: **1**

✓ Pet Policy: [Call](#)

✓ Community Features: [Dog Park](#)

✓ Pool: [Association](#)

✓ Amenities: [Pool, Spa/hot Tub](#)

✓ Parking: [0.00](#)

✓ Lot Features: [Level With Street, Level, Lot 20000-39999 Sqft](#)

Entry Level: **1**

✓ Laundry: [Gas Dryer Hookup, Washer Hookup, See Remarks](#)

✓ Flooring: [Carpet](#)

✓ Entry Location: [Front Door](#)

✓ Heating System: [Central](#)

✓ Water Source: [See Remarks](#)

✓ Sewer:

MLS [Addon](#)

Association Fee Frequency: **Monthly**

Parcel Number: **0275211536021**

Lot Size Square Feet: **4,000**

TaxAnnualAmount: **\$0**

Association Fee: **\$1,000**

High School: **Arlington**

High School 2: **Arling**

Middle Or Junior School: **Miller**

High School District: **Colton Unified**

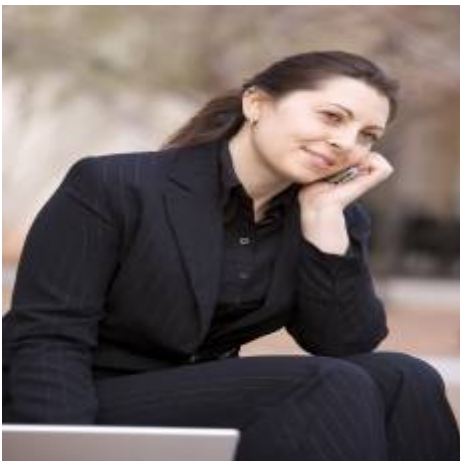
Levels: **One**

Taxes: **\$0**

Guest House SqFt: **0**

Approx Lot SqFt: **0**

Special Listing Conditions: [Standard](#)

Agent [Info](#)

Rina Maya

858-876-7946

800-878-0907

Questions@unitedbrokersinc.net

