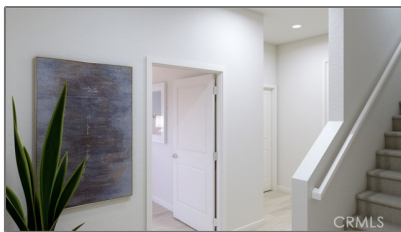


Residential For Sale

2,483 Sqft - 1818 E. 1st Street, Santa Ana,
California, 92701



Basic Details

Status:	Active
Listing Type:	For Sale
Property Type:	Residential
Property SubType:	Condominium
Price:	\$1,012,990
Price Per Square Foot:	\$408
Square Footage:	2,483 Sqft
Year Built:	2024
View:	Mountain(s)
Bedrooms:	3
Bathrooms:	4
Bathrooms (Full):	2
Bathrooms (1/2):	2
Country:	US
State:	California
County:	Orange
City:	Santa Ana
Zipcode:	92701
Listing ID:	OC24221559

Features

Association:	1
Senior Community:	0
✓ Common Walls:	2+ Common Walls
Stories:	4
✓ Community Features:	Sidewalks, Street Lights
✓ Amenities:	Outdoor Cooking Area
AttachedGarage :	1
✓ Parking:	2.00
✓ Parking:	Direct Garage Access
Spa:	0
✓ Patio:	Patio, Concrete
Entry Level:	1
✓ Laundry:	Gas Dryer Hookup, Inside, Upper Level, In Closet
✓ Room Type:	Laundry, All Bedrooms Up, Great Room, Walk-in Pantry, Entry, Bonus Room
✓ Entry Location:	Ground Level With Steps
✓ Property Condition:	Under Construction

✓	Interior Features:	Open Floorplan, Pantry, Balcony, Living Room Balcony, Quartz Counters
---	--------------------	---

Main Level		1
Bathrooms:		
✓	Heating System:	Central
✓	Cooling System:	Central Air
✓	Utilities:	Underground Utilities
✓	Water Source:	Public
✓	Sewer:	Public Sewer
✓	Appliances:	Dishwasher, Disposal, Gas Range, Microwave, Convection Oven

MLS Addon

Association Fee Frequency:	Monthly
TaxAnnualAmount:	\$0
Association Fee:	\$344
✓ RoomKitchenFeatures:	Kitchen Island, Quartz Counters, Kitchen Open To Family Room, Walk-in Pantry
✓ RoomBathroomFeatures:	Shower In Tub, Quartz Counters, Double Sinks In Primary Bath
Garage Spaces:	2
High School:	Arlington
High School 2:	Arling
Middle Or Junior School:	Miller
High School District:	Tustin Unified
Levels:	Three Or More
✓ EatingArea:	Breakfast Counter / Bar, Family Kitchen

Taxes:	\$0
Guest House SqFt:	0 Sqft
Approx Lot SqFt:	0 Sqft
<div>✓</div> Special Listing Conditions:	Standard

Agent [Info](#)



Rina Maya
☎ 858-876-7946
☎ 800-878-0907
✉ Questions@unitedbrokersinc.net

-
