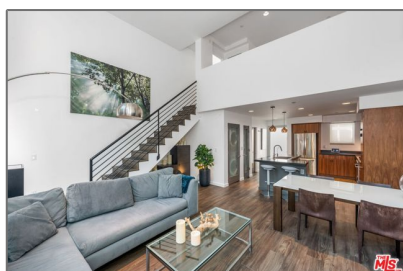


Residential For Sale

1,320 Sqft - 1120 El Centro Avenue, Los Angeles, California, 90038



Basic Details

Status:	Active
Listing Type:	For Sale
Property Type:	Residential
Property SubType:	Condominium
Price:	\$947,000
Price Per Square Foot:	\$717
Square Footage:	1,320 Sqft
Lot Area:	0.47 Sqft
Year Built:	2008
View:	Mountain(s)
Bedrooms:	2
Bathrooms:	2
Bathrooms (Full):	2
Country:	US

Features

Association:	1
Senior Community:	0
Stories:	3
✓ Amenities:	Controlled Access
✓ Parking:	2.00
✓ Parking:	Tandem Garage, Controlled Entrance, Community Structure
✓ Fireplace:	Living room, Electric
✓ Security:	Automatic gate, Card/code access
Entry Level:	1
✓ Laundry:	Inside, Stackable, Dryer Included, Washer Included
✓ Room Type:	Living Room, Loft, Walk-in Closet

State:	California
County:	Los Angeles
City:	Los Angeles
Zipcode:	90038
Listing ID:	24455021

✓ Interior Features:	Ceiling Fan(s)
✓ Heating System:	Central, Forced air
✓ Cooling System:	Central Air
✓ Appliances:	Dishwasher, Microwave, Refrigerator

MLS [Addon](#)

Association Fee Frequency:	Monthly
Zoning:	LARD1.5
Parcel Number:	5534007035
Lot Size Square Feet:	20,255 Sqft
TaxAnnualAmount:	\$0
Association Fee:	\$414
Garage Spaces:	2
High School:	Arlington
High School 2:	Arling
Middle Or Junior School:	Miller
Levels:	Three Or More
Taxes:	\$0
Guest House SqFt:	0 Sqft
Approx Lot SqFt:	0 Sqft
✓ Special Listing Conditions:	Standard
Virtual Tour URL Unbranded:	Click Here

Agent [Info](#)



Rina Maya

☎ 858-876-7946

☎ 800-878-0907

✉ Questions@unitedbrokersinc.net
