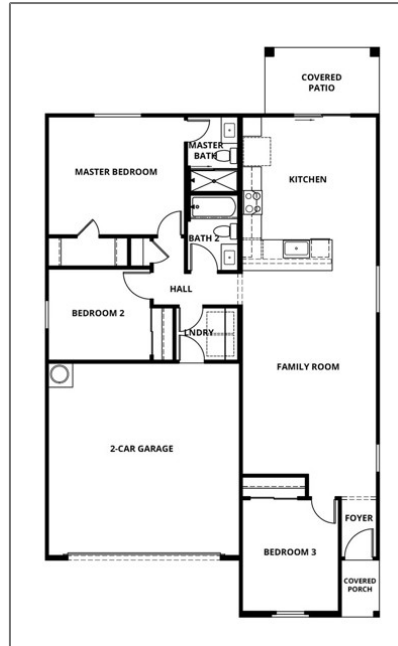


Residential For Sale

1,287 Sqft - 42425 PalisadesDrive, Indio,
California, 92203



Basic Details

Status: **Active**

Listing Type: **For Sale**

Property Type: **Residential**

Property SubType: **Single Family Residence**

Price: **\$524,900**

Price Per Square Foot: **\$408**

Square Footage: **1,287 Sqft**

Year Built: **2024**

View: **Mountain(s)**

Bedrooms: **3**

Bathrooms: **2**

Bathrooms (Full): **2**

Country: **US**

Features

Association: **1**

Senior Community: **1**

✓ Common Walls: **No Common Walls**

Stories: **1**

✓ Community Features: **Golf, Hiking, Park, Biking**

✓ Amenities: **Picnic Area, Playground, Controlled Access**

AttachedGarage : **1**

✓ Parking: **2.00**

✓ Parking: **Garage**

Spa: **0**

✓ Lot Features: **Park Nearby, 0-1 Unit/acre, Sprinklers Drip System, Paved, Sprinklers On Side,**

State:	California		Sprinklers In Rear, Sprinklers In Front, Sprinklers Timer
County:	Riverside		
City:	Indio	✓ Fence:	Vinyl
Zipcode:	92203	✓ Security:	Gated community
Listing ID:	SW24100706	✓ Patio:	Covered
		✓ Electric:	Standard
		Entry Level:	1
		✓ Laundry:	Electric Dryer Hookup, Inside, Washer Hookup
		✓ Room Type:	Kitchen, Great Room, Walk-in Pantry, Main Floor Bedroom, Main Floor Primary Bedroom
		✓ Entry Location:	Front Level
		✓ Foundation Details:	Slab
		✓ Interior Features:	Open Floorplan, Pantry, Granite Counters
		Main Level Bathrooms:	2
		Main Level Bedrooms:	3
		✓ Cooling System:	Electric, Central Air
		✓ Utilities:	Sewer Connected, Water Connected, Electricity Connected, Cable Connected, Other
		✓ Water Source:	Public
		✓ Sewer:	Public Sewer
		✓ Appliances:	Dishwasher, Disposal, Electric Oven, Microwave, Refrigerator, Self Cleaning Oven, Ice Maker, Water Heater, Electric Range, Electric Water Heater

Association Fee Frequency: **Monthly**

Parcel Number: **606040050**

Lot Size Square Feet: **0.13 Sqft**

Tax Annual Amount: **\$0**

Association Fee: **\$200**

✓ Room Kitchen Features: **Granite Counters, Kitchen Island, Kitchen Open To Family Room, Self-closing Drawers**

✓ Room Bathroom Features: **Shower, Bathtub, Granite Counters**

Garage Spaces: **2**

High School: **Palm Desert**

High School 2: **Paldes**

Middle Or Junior School: **Colonel Mitchell**

Elementary School: **James Monroe**

High School District: **Desert Sands Unified**

Levels: **One**

✓ Eating Area: **Dining Room, In Kitchen, Breakfast Counter / Bar**

Taxes: **\$0**

Guest House SqFt: **0 Sqft**

Approx Lot SqFt: **0 Sqft**

✓ Special Listing Conditions: **Standard**

Agent [Info](#)



Rina Maya

☎ 858-876-7946

☎ 800-878-0907

✉ Questions@unitedbrokersinc.net
