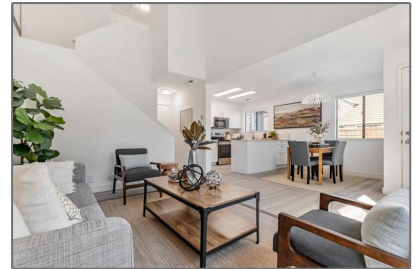


# Residential For Sale

1,036 Sqft - 429 Creekside Lane, Morgan Hill,  
California, 95037



## Basic Details

Status:	<b>Active</b>
Listing Type:	<b>For Sale</b>
Property Type:	<b>Residential</b>
Property SubType:	<b>Townhouse</b>
Price:	<b>\$725,000</b>
Price Per Square Foot:	<b>\$700</b>
Square Footage:	<b>1,036 Sqft</b>
Year Built:	<b>1984</b>
View:	<b>Mountain(s)</b>
Bedrooms:	<b>2</b>
Bathrooms:	<b>2</b>
Bathrooms (Full):	<b>1</b>
Bathrooms (1/2):	<b>1</b>
State:	<b>California</b>
County:	<b>Santa Clara</b>
City:	<b>Morgan Hill</b>
Zipcode:	<b>95037</b>
Listing ID:	<b>ML81984656</b>

## Features

✓ View:	<b>Mountain(s), Neighborhood, Hills</b>
Association:	<b>1</b>
Stories:	<b>2</b>
✓ Pool:	<b>Fenced, In ground, Community</b>
✓ Amenities:	<b>Pool, Spa/hot Tub, Tennis Court(s), Clubhouse, Management, Playground, Gym/ex Room</b>
AttachedGarage :	<b>1</b>
✓ Parking	
✓ Parking:	<b>Gated, Guest</b>
Spa:	<b>1</b>
✓ Laundry:	<b>In Garage</b>
✓ Room Type:	<b>Formal Entry</b>
✓ Roofing:	<b>Composition</b>
✓ Spa Construction:	<b>Community, In Ground</b>
✓ Foundation Details:	<b>Slab</b>
✓ Heating System:	<b>Central</b>

✓	Cooling System:	Central Air
✓	Water Source:	Public
✓	Sewer:	Public Sewer
✓	Appliances:	Dishwasher, Disposal, Refrigerator, Range Hood

## MLS [Addon](#)

Association Fee Frequency: **Monthly**

Zoning: **R1PD**

Parcel Number: **72603055**

TaxAnnualAmount: **\$0**

Association Fee: **\$365**

✓ RoomKitchenFeatures: **Quartz Counters**

Garage Spaces: **1**

High School: **Arlington**

High School 2: **Arling**

Middle Or Junior School: **Miller**

High School District: **Other**

✓ EatingArea: **Breakfast Counter / Bar, Breakfast Nook, In Living Room**

Taxes: **\$0**

Guest House SqFt: **0**

Approx Lot SqFt: **0**

✓ Special Listing Conditions: **Standard**

Virtual Tour URL Unbranded: **[Click Here](#)**

Agent [Info](#)



Rina Maya

☎ 858-876-7946

☎ 800-878-0907

✉ [Questions@unitedbrokersinc.net](mailto:Questions@unitedbrokersinc.net)

---