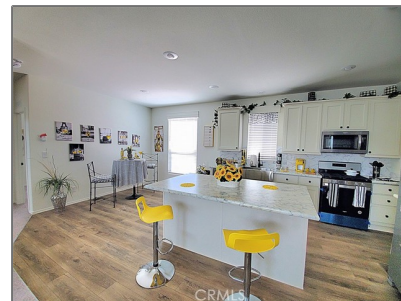


Manufactured In Park For Sale

1,344 Sqft - 21621 Sandia, Apple Valley, California, 92308



Basic Details

Status:	Active
Listing Type:	For Sale
Property Type:	Manufactured In Park
Price:	\$189,000
Price Per Square Foot:	\$141
Square Footage:	1,344 Sqft
Year Built:	2024
View:	Mountain(s)
Bedrooms:	3
Bathrooms:	2
Bathrooms (Full):	2
Country:	US
State:	California
County:	San Bernardino
City:	Apple Valley
Zipcode:	92308
Listing ID:	HD24171986

Features

Association:	0
Senior Community:	1
Stories:	1
✓ Pet Policy:	Breed restrictions
✓ Community Features:	Hiking, Park, Dog Park
✓ Pool:	Community
AttachedGarage :	1
✓ Parking:	2.00
✓ Parking:	Garage
Spa:	1
✓ Lot Features:	0-1 Unit/acre
Entry Level:	1
✓ Laundry:	Individual Room
✓ Window Features:	Double Pane Windows, Screens, Blinds
✓ Entry Location:	Gate
✓ Spa Construction:	Community

✓	Interior Features:	Pantry, Beamed Ceilings, Laminate Counters
✓	Heating System:	Central
✓	Cooling System:	Central Air
✓	Water Source:	Private
✓	Sewer:	Private Sewer
✓	Appliances:	Dishwasher, Disposal, Gas Range, Microwave, Refrigerator, Ice Maker

MLS [Addon](#)

Parcel Number:	0434063386138
TaxAnnualAmount:	\$0
✓ RoomKitchenFeatures:	Kitchen Island, Kitchen Open To Family Room
Garage Spaces:	2
High School:	Arlington
High School 2:	Arling
Middle Or Junior School:	Miller
High School District:	San Bernardino City Unified
Taxes:	\$0
Guest House SqFt:	0
Approx Lot SqFt:	0
✓ Special Listing Conditions:	Standard

Agent [Info](#)



Rina Maya

☎ 858-876-7946

☎ 800-878-0907

✉ Questions@unitedbrokersinc.net
