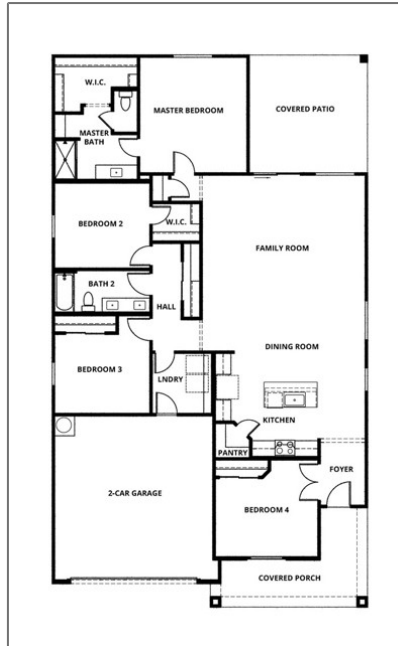


# Residential For Sale

1,934 Sqft - 42493 PalisadesDrive, Indio, California, 92203



## Basic Details

Status:	<b>Active</b>
Listing Type:	<b>For Sale</b>
Property Type:	<b>Residential</b>
Property SubType:	<b>Single Family Residence</b>
Price:	<b>\$597,900</b>
Price Per Square Foot:	<b>\$309</b>
Square Footage:	<b>1,934 Sqft</b>
Lot Area:	<b>0.13 Sqft</b>
Year Built:	<b>2024</b>
View:	<b>Mountain(s)</b>
Bedrooms:	<b>4</b>
Bathrooms:	<b>2</b>
Bathrooms (Full):	<b>2</b>

## Features

Association:	<b>1</b>
Senior Community:	<b>0</b>
✓ Common Walls:	<b>No Common Walls</b>
Stories:	<b>1</b>
✓ Community Features:	<b>Park</b>
✓ Amenities:	<b>Picnic Area, Playground</b>
AttachedGarage :	<b>1</b>
✓ Parking:	<b>2.00</b>
✓ Parking:	<b>Driveway, Garage - Single Door, Garage, Concrete, Garage Faces Front</b>
Spa:	<b>0</b>
✓ Lot Features:	<b>Back Yard, Front Yard, 0-1 Unit/acre,</b>

Country:	<b>US</b>	Landscaped, Sprinklers Drip System, Sprinklers Timer
State:	<b>California</b>	
County:	<b>Riverside</b>	Vinyl
City:	<b>Indio</b>	Gated community
Zipcode:	<b>92203</b>	Covered, Patio, Front Porch, Porch
Listing ID:	<b>SW24076717</b>	Standard, 220 Volts In Laundry, 220 Volts In Kitchen



Fence:

Vinyl



Security:

Gated community



Patio:

Covered, Patio, Front  
Porch, Porch



Electric:

Standard, 220 Volts In  
Laundry, 220 Volts In  
Kitchen

Entry Level:

**1**



Laundry:

Electric Dryer Hookup,  
Individual Room, Inside,  
Washer Hookup



Room Type:

Living Room, Walk-in  
Closet, Kitchen, Walk-in  
Pantry, All Bedrooms  
Down, Primary Suite



Roofing:

Concrete



Flooring:

Carpet, Laminate, Vinyl



Window Features:

Insulated Windows



Entry Location:

Front



Foundation Details:

Slab



Interior Features:

Open Floorplan, Pantry,  
Recessed Lighting,  
Granite Counters

Main Level

**2**

Bathrooms:

Main Level

**3**

Bedrooms:



Heating System:

Heat Pump, Central,  
High efficiency



Cooling System:

Whole house fan, High  
efficiency, Heat pump,  
Central Air



Utilities:

Sewer Connected, Water  
Connected, Cable  
Available, Electricity  
Connected, Other

✓	Water Source:	Public
✓	Sewer:	Public Sewer
✓	Appliances:	Dishwasher, Disposal, Electric Oven, Microwave, Refrigerator, Self Cleaning Oven, Ice Maker, Electric Range, Electric Water Heater

## MLS Addon

Association Fee Frequency: **Monthly**

Parcel Number: **606040058**

Lot Size Square Feet: **5,524 Sqft**

Tax Annual Amount: **\$0**

Association Fee: **\$200**

✓ Room Kitchen Features: Granite Counters, Kitchen Island, Kitchen Open To Family Room, Self-closing Drawers, Walk-in Pantry

✓ Room Bathroom Features: Granite Counters, Privacy Toilet Door

Garage Spaces: **2**

High School: **Palm Desert**

High School 2: **Paldes**

Middle Or Junior School: **Colonel Mitchell**

Elementary School: **James Monroe**

High School District: **Desert Sands Unified**

Levels: **One**

✓ Eating Area: Dining Room, Area

Taxes: **\$0**

Guest House SqFt: **0 Sqft**

Approx Lot SqFt:

**0 Sqft**

✓ Special Listing  
Conditions:

Standard

## Agent Info

---



Rina Maya

☎ 858-876-7946

☎ 800-878-0907

✉ [Questions@unitedbrokersinc.net](mailto:Questions@unitedbrokersinc.net)

---