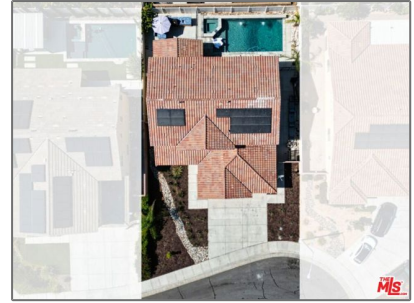


# Residential For Sale

3,224 Sqft - 36640 ObariaWay, Lake Elsinore,  
California, 92532



## Basic Details

Status:	<b>Active</b>
Listing Type:	<b>For Sale</b>
Property Type:	<b>Residential</b>
Property SubType:	<b>Single Family Residence</b>
Price:	<b>\$709,250</b>
Price Per Square Foot:	<b>\$220</b>
Square Footage:	<b>3,224 Sqft</b>
Lot Area:	<b>0.17 Sqft</b>
Year Built:	<b>2017</b>
View:	<b>Mountain(s)</b>
Bedrooms:	<b>5</b>
Bathrooms:	<b>3</b>
Bathrooms (Full):	<b>3</b>
Country:	<b>US</b>
State:	<b>California</b>
County:	<b>Riverside</b>
City:	<b>Lake Elsinore</b>
Zipcode:	<b>92532</b>

## Features

Association:	<b>1</b>
Senior Community:	<b>0</b>
✓ Common Walls:	<b>No Common Walls</b>
Stories:	<b>2</b>
✓ Pool:	<b>Fenced, In ground</b>
✓ Parking:	<b>3.00</b>
✓ Parking:	<b>Garage - Three Door</b>
Spa:	<b>1</b>
✓ Laundry:	<b>Upper Level, Dryer Included, Washer Included</b>
✓ Room Type:	<b>Living Room, Walk-in Closet, Walk-in Pantry, Primary Bathroom</b>
✓ Flooring:	<b>Carpet</b>
✓ Spa Construction:	<b>In Ground</b>
✓ Interior Features:	<b>Ceiling Fan(s)</b>
✓ Heating System:	<b>Central</b>
✓ Cooling System:	<b>Central Air</b>
✓ Appliances:	<b>Dishwasher, Microwave</b>

Listing ID: **24422297**

MLS [Addon](#)

Association Fee Frequency: **Monthly**

Parcel Number: **358710030**

Lot Size Square Feet: **7,405 Sqft**

TaxAnnualAmount: **\$0**

Association Fee: **\$134**

RoomKitchenFeatures: [Kitchen Island](#)

RoomBathroomFeatures: [Vanity Area, Low Flow Toilet\(s\)](#)

Garage Spaces: **3**

High School: **Arlington**

High School 2: **Arling**

Middle Or Junior School: **Miller**

Levels: **Two**

EatingArea: [Dining Room](#)

Taxes: **\$0**

Guest House SqFt: **0 Sqft**

Approx Lot SqFt: **0 Sqft**

Special Listing Conditions: [Standard](#)

Virtual Tour URL Unbranded: [Click Here](#)

Agent [Info](#)

---



Rina Maya

☎ 858-876-7946

☎ 800-878-0907

✉ [Questions@unitedbrokersinc.net](mailto:Questions@unitedbrokersinc.net)

---