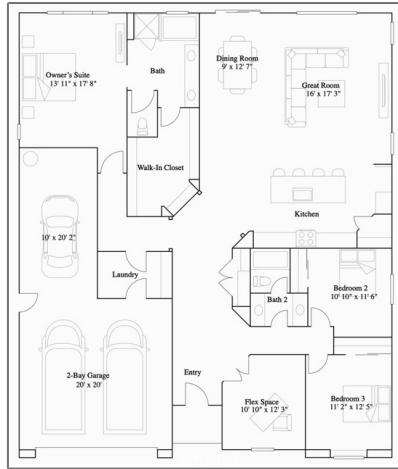


# Residential For Sale

2,287 Sqft - 2383 Diamond Edge Road, Perris, California, 92570



## Basic Details

Status:	<b>Active</b>
Listing Type:	<b>For Sale</b>
Property Type:	<b>Residential</b>
Property SubType:	<b>Single Family Residence</b>
Price:	<b>\$589,155</b>
Price Per Square Foot:	<b>\$258</b>
Square Footage:	<b>2,287 Sqft</b>
Lot Area:	<b>0.15 Sqft</b>
Year Built:	<b>2025</b>
View:	<b>Mountain(s)</b>
Bedrooms:	<b>3</b>
Bathrooms:	<b>2</b>
Bathrooms (Full):	<b>2</b>
Country:	<b>US</b>
State:	<b>California</b>
County:	<b>Riverside</b>

## Features

Association:	<b>1</b>
Senior Community:	<b>0</b>
✓ Common Walls:	<b>No Common Walls</b>
Stories:	<b>1</b>
✓ Community Features:	<b>Sidewalks, Street Lights, Suburban, Curbs, Gutters</b>
✓ Amenities:	<b>Picnic Area, Playground, Sport Court</b>
Attached Garage:	<b>1</b>
✓ Parking:	<b>3.00</b>
✓ Parking:	<b>Driveway, Direct Garage Access, Garage</b>
✓ Lot Features:	<b>Front Yard, Sprinkler System, Lot 6500-9999, Level</b>
✓ Fence:	<b>Vinyl</b>
✓ Security:	<b>Carbon monoxide detector(s), Smoke Detector(s)</b>

City:	<b>Perris</b>
Zipcode:	<b>92570</b>
Listing ID:	<b>SW24226619</b>

Entry Level:	<b>1</b>
✓ Laundry:	Individual Room, Inside
✓ Room Type:	Office, Walk-in Closet, Kitchen, Laundry, Great Room, Walk-in Pantry, Main Floor Bedroom, All Bedrooms Down, Entry, Main Floor Primary Bedroom, Primary Bathroom, Primary Bedroom
✓ Roofing:	Tile
✓ Entry Location:	Ground
✓ Property Condition:	Turnkey
✓ Foundation Details:	Slab
✓ Interior Features:	Open Floorplan, Pantry, Recessed Lighting, Granite Counters

Main Level Bathrooms: **2**

Main Level Bedrooms: **3**

✓ Heating System:	Central
✓ Cooling System:	Central Air
✓ Utilities:	Sewer Connected, Water Connected, Electricity Connected, Natural Gas Connected, Phone Connected, Underground Utilities, Cable Connected
✓ Water Source:	Public
✓ Sewer:	Public Sewer
✓ Appliances:	Dishwasher, Disposal, Microwave, Free-standing Range

MLS Addon

Association Fee Frequency:	<b>Monthly</b>
----------------------------	----------------

Lot Size Square Feet: **6,700 Sqft**

Tax Annual Amount: **\$0**

Association Fee: **\$99**

✓ Room Kitchen Features: [Granite Counters, Kitchen Island, Kitchen Open To Family Room, Walk-in Pantry](#)

✓ Room Bathroom Features: [Shower, Shower In Tub, Double Sinks In Bath\(s\), Double Sinks In Primary Bath](#)

Garage Spaces: **3**

High School: **Arlington**

High School 2: **Arling**

Middle Or Junior School: **Miller**

High School District: **Perris Union High**

Levels: **One**

✓ Eating Area: [Dining Room, Breakfast Counter / Bar](#)

Taxes: **\$0**

Guest House SqFt: **0 Sqft**

Approx Lot SqFt: **0 Sqft**

✓ Special Listing Conditions: [Standard](#)

Virtual Tour URL Unbranded: [Click Here](#)

Agent [Info](#)

---



Rina Maya

☎ 858-876-7946

☎ 800-878-0907

✉ [Questions@unitedbrokersinc.net](mailto:Questions@unitedbrokersinc.net)

---