

Manufactured In Park For Sale

1,344 Sqft - 10320 Calimesa Boulevard, Calimesa, California, 92320



Basic Details

Status: **Active**

Listing Type: **For Sale**

Property Type: **Manufactured In Park**

Price: **\$120,000**

Price Per Square Foot: **\$89**

Square Footage: **1,344 Sqft**

Year Built: **1978**

View: **Mountain(s)**

Bedrooms: **2**

Bathrooms: **2**

Bathrooms (Full): **2**

Country: **US**

State: **California**

County: **Riverside**

City: **Calimesa**

Zipcode: **92320**

Listing ID: **SW24203904**

Features

Association: **0**

Senior Community: **1**

✓ Common Walls: **No Common Walls**

Stories: **1**

✓ Pet Policy: **Size limit, Number limit**

✓ Community Features: **Suburban, Mountainous**

✓ Parking: **2.00**

✓ Parking: **Attached Carport**

✓ Lot Features: **Patio Home**

✓ Inclusions: **Washer, Dryer, Storage Shed, Refrigerator.**

Entry Level: **1**

✓ Laundry: **Inside**

✓ Entry Location: **Walkway**

Main Level Bathrooms: **2**

Main Level Bedrooms: **3**

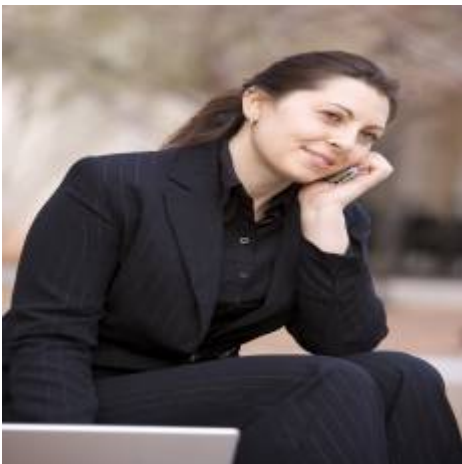
✓ Heating System: **Central**

✓	Water Source:	Public
✓	Sewer:	Unknown

MLS [Addon](#)

Parcel Number:	009715565
TaxAnnualAmount:	\$0
High School:	Arlington
High School 2:	Arling
Middle Or Junior School:	Miller
High School District:	Beaumont
Levels:	One
✓ EatingArea:	Dining Room
Taxes:	\$0
Guest House SqFt:	0 Sqft
Approx Lot SqFt:	0 Sqft
✓ Special Listing Conditions:	Standard

Agent [Info](#)



Rina Maya
 ☎ 858-876-7946
 ☎ 800-878-0907
 ✉ Questions@unitedbrokersinc.net