

Residential Rent For Rent

1,437 Sqft - 600 Heliotrope Avenue, Corona del Mar, California, 92625



Basic Details

Status: **Active**

Listing Type: **For Rent**

Property Type: **Residential Rent**

Property SubType: **Condominium**

Price: **\$8,500**

Price Per Square Foot: **\$6**

Square Footage: **1,437 Sqft**

Lot Area: **0.08 Sqft**

Year Built: **1991**

View: **Mountain(s)**

Bedrooms: **3**

Bathrooms: **3**

Bathrooms (Full): **2**

Bathrooms (1/2): **1**

Country: **US**

State: **California**

County: **Orange**

City: **Corona del Mar**

Zipcode: **92625**

Features

✓ View: **City Lights, Coastline, Peek-a-boo**

Association: **0**

Senior Community: **0**

✓ Common Walls: **1 Common Wall**

Stories: **2**

✓ Pet Policy: **Call**

✓ Community Features: **Sidewalks, Street Lights, Park, Curbs, Dog Park, Gutters**

Attached Garage: **1**

✓ Parking

✓ Parking: **Garage**

Spa: **0**

✓ Fireplace: **Living room**

✓ Lot Features: **Corner Lot**

✓ Fence: **Glass**

✓ Security: **Carbon monoxide detector(s), Smoke Detector(s)**

✓ Patio

Listing ID:

PW24192008

Patio

✓ Furnished:

Unfurnished

Entry Level:

1

✓ Laundry:

Inside

✓ Room Type:

Living Room, Kitchen,
Laundry

✓ Roofing:

Composition

✓ Flooring:

Laminate

✓ Entry Location

✓ Foundation Details:

Slab

✓ Exterior Features:

Lighting

✓ Interior Features:

Open Floorplan, Balcony

✓ Heating System:

Central

✓ Cooling System:

Central Air

✓ Utilities:

Sewer Connected, Water
Connected, Electricity
Connected, Natural Gas
Connected, Phone
Available

✓ Water Source:

Public

✓ Sewer:

Public Sewer

✓ Appliances:

Dishwasher, Gas Water
Heater, Refrigerator,
Tankless Water Heater,
Self Cleaning Oven, Gas
Cooktop

MLS Addon

Parcel Number: **93801178**

Lot Size Square
Feet: **3,540 Sqft**

TaxAnnualAmount: **\$0**

✓ RoomKitchenFeatures:

Kitchen Island,
Remodeled Kitchen

✓ RoomBathroomFeatures: [Shower, Walk-in Shower, Remodeled](#)

Garage Spaces: **1**

High School: **Corona Del Mar**

High School 2: **Codema**

Middle Or Junior School: **Corona Del Mar**

Elementary School: **Harbor View**

High School District: **Newport Mesa Unified**

Levels: **Two**

✓ EatingArea: [Breakfast Nook](#)

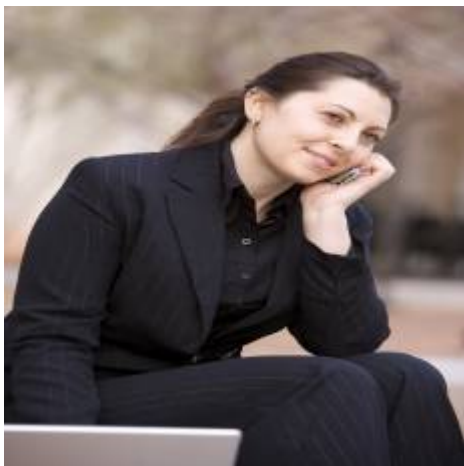
Taxes: **\$0**

Guest House SqFt: **0 Sqft**

Approx Lot SqFt: **0 Sqft**

✓ Special Listing Conditions: [Standard](#)

Agent [Info](#)



Rina Maya

📞 858-876-7946

📞 800-878-0907

✉ Questions@unitedbrokersinc.net
