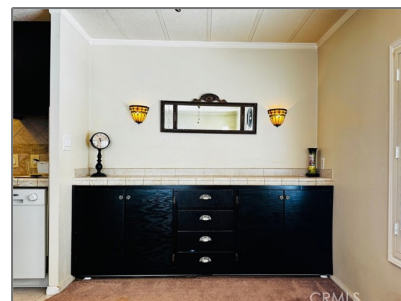


Manufactured In Park For Sale

1,440 Sqft - 2550 East Ave. I, Lancaster, California, 93535



Basic Details

Status:	Active
Listing Type:	For Sale
Property Type:	Manufactured In Park
Price:	\$150,000
Price Per Square Foot:	\$104
Square Footage:	1,440 Sqft
Year Built:	1973
View:	Mountain(s)
Bedrooms:	3
Bathrooms:	2
Bathrooms (Full):	2
Country:	US
State:	California
County:	Los Angeles
City:	Lancaster
Zipcode:	93535
Listing ID:	SR24232192

Features

Association:	1
Senior Community:	1
Stories:	1
✓ Pet Policy:	Call
✓ Community Features:	Suburban, Park
✓ Pool:	Gunite, Community
✓ Amenities:	Pool, Clubhouse, Meeting Room, Management, Picnic Area, Sport Court, Gym/ex Room, Maintenance Grounds, Recreation Room, Controlled Access, Trash, Sewer, Security
✓ Parking:	0.00
✓ Parking:	Driveway, Attached Carport, Covered, Carport
✓ Lot Features:	0-1 Unit/acre, Rectangular Lot, Corner Lot
✓ Security:	Automatic gate, Gated community, Card/code access, Resident

manager, Security lights,
Closed Circuit Camera(s)

✓ Patio: Covered, Patio, Rear
Porch

✓ Inclusions: Washer/dryer,
Washer/dryer And Fridge
In Unit B, Shed, Reverse
Osmosis And Water
Sofener, Two
Refrigerators

Entry Level: **1**

✓ Laundry: Gas Dryer Hookup,
Inside, Washer Hookup,
Stackable, Dryer
Included, Washer
Included, In Closet

✓ Room Type: Family Room, Living
Room, Kitchen, Laundry,
All Bedrooms Down,
Entry

✓ Flooring: Carpet, Tile

✓ Window Features: Shutters

✓ Entry Location: East Ave. I

✓ Property Condition: Turnkey,
Updated/remodeled

✓ Foundation Details: Quake Bracing

✓ Exterior Features: Awning(s)

✓ Interior Features: Built-in Features, Ceiling
Fan(s), Living Room Deck
Attached, Storage, Tile
Counters

✓ Heating System: Floor furnace, Forced air,
natural gas

✓ Utilities: Sewer Connected, Cable
Available, Electricity
Connected, Natural Gas
Connected

✓ Water Source: Public

✓ Sewer: Sewer Paid

✓ Appliances: Dishwasher, Gas Range,
Gas Water Heater,

Refrigerator, Gas Oven,
Free-standing Range

✓ Accessibility
Features:

Parking, 2+ Access Exits,
Ramp - Main Level

MLS Addon

Parcel Number: **3140040008**

TaxAnnualAmount: **\$0**

✓ RoomKitchenFeatures: **Remodeled Kitchen, Tile Counters**

✓ RoomBathroomFeatures: **Tile Counters**

High School: **Arlington**

High School 2: **Arling**

Middle Or Junior School: **Miller**

High School District: **Lancaster**

Levels: **One**

Taxes: **\$0**

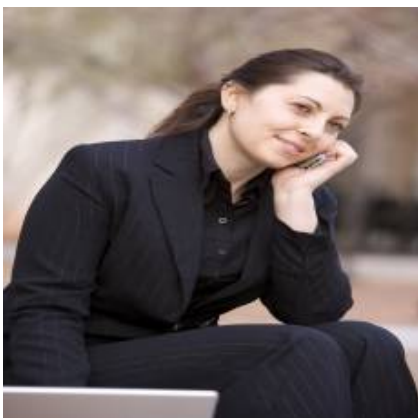
✓ OtherStructures: **Shed(s), Storage**

Guest House SqFt: **0**

Approx Lot SqFt: **0**

✓ Special Listing Conditions: **Standard**

Agent Info



Rina Maya

☎ 858-876-7946

☎ 800-878-0907

✉ Questions@unitedbrokersinc.net

