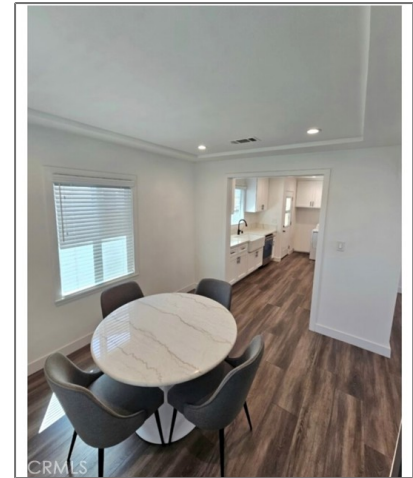
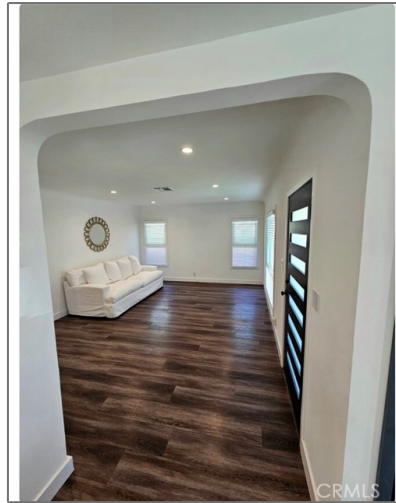


# Residential For Sale

1,192 Sqft - 16823 HARVARD Boulevard, Gardena,  
California, 90247



## Basic Details

|                        |                                |
|------------------------|--------------------------------|
| Status:                | <b>Active</b>                  |
| Listing Type:          | <b>For Sale</b>                |
| Property Type:         | <b>Residential</b>             |
| Property SubType:      | <b>Single Family Residence</b> |
| Price:                 | <b>\$925,000</b>               |
| Price Per Square Foot: | <b>\$776</b>                   |
| Square Footage:        | <b>1,192 Sqft</b>              |
| Lot Area:              | <b>0.11 Sqft</b>               |
| Year Built:            | <b>1948</b>                    |
| View:                  | <b>Mountain(s)</b>             |
| Bedrooms:              | <b>3</b>                       |
| Bathrooms:             | <b>2</b>                       |
| Bathrooms (Full):      | <b>2</b>                       |
| Country:               | <b>US</b>                      |
| State:                 | <b>California</b>              |

## Features

|                       |  |
|-----------------------|--|
| Association:          | <b>0</b>   |
| Senior Community:     | <b>0</b>   |
| ✓ Common Walls:       | <b>No Common Walls</b>                           |
| Stories:              | <b>1</b>   |
| ✓ Community Features: | <b>Sidewalks, Curbs</b>                          |
| Attached Garage:      | <b>0</b>   |
| ✓ Parking:            | <b>2.00</b>                                      |
| ✓ Parking:            | <b>Driveway</b>                                  |
| Spa:                  | <b>0</b>   |
| ✓ Lot Features:       | <b>Front Yard, Paved</b>                         |
| ✓ Fence:              | <b>Excellent condition, New condition, Block</b> |
| ✓ Security:           | <b>Smoke Detector(s)</b>                         |
| ✓ Electric:           | <b>Electricity - On Property</b>                 |
| ✓ Inclusions:         | <b>All Appliances Included</b>                   |

|             |                    |
|-------------|--------------------|
| County:     | <b>Los Angeles</b> |
| City:       | <b>Gardena</b>     |
| Zipcode:    | <b>90247</b>       |
| Listing ID: | <b>SB24232797</b>  |

|                       |  |
|-----------------------|--|
| Entry Level:          | <b>1</b>   |
| ✓ Laundry:            | In Kitchen   |
| ✓ Room Type:          | Living Room, All Bedrooms Down                           |
| ✓ Roofing:            | Composition  |
| ✓ Flooring:           | Laminate   |
| ✓ Window Features:    | Double Pane Windows                                      |
| ✓ Entry Location:     | Front Door   |
| ✓ Property Condition: | Turnkey  |
| ✓ Foundation Details: | Raised   |
| ✓ Interior Features:  | Built-in Features, Copper Plumbing Full, Quartz Counters |

|                       |          |
|-----------------------|----------|
| Main Level Bathrooms: | <b>2</b> |
|-----------------------|----------|

|                      |          |
|----------------------|----------|
| Main Level Bedrooms: | <b>3</b> |
|----------------------|----------|

|                           |   |
|---------------------------|---|
| ✓ Heating System:         | Central   |
| ✓ Cooling System:         | Central Air   |
| ✓ Utilities:              | Electricity Available, Natural Gas Available, Sewer Connected, Water Available, Water Connected, Phone Available, Sewer Available |
| ✓ Water Source:           | Public  |
| ✓ Sewer:                  | Public Sewer  |
| ✓ Appliances:             | Dishwasher, Disposal, Built-in Range, Gas Range, Gas Water Heater, Microwave, Gas Oven, Free-standing Range                       |
| ✓ Accessibility Features: | Parking   |

## MLS Addon

---

Zoning: **GAR2**

Parcel Number: **6106004025**

Lot Size Square Feet: **5,005**

Lot Size Dimensions: **150X40**

TaxAnnualAmount: **\$0**

RoomKitchenFeatures: **Quartz Counters, Remodeled Kitchen**

RoomBathroomFeatures: **Shower**

Garage Spaces: **2**

High School: **Arlington**

High School 2: **Arling**

Middle Or Junior School: **Miller**

High School District: **Los Angeles Unified**

Levels: **One**

EatingArea: **Area**

Taxes: **\$0**

Guest House SqFt: **0**

Approx Lot SqFt: **0**

Special Listing Conditions: **Standard**

## Agent Info

---



Rina Maya

☎ 858-876-7946

☎ 800-878-0907

✉ [Questions@unitedbrokersinc.net](mailto:Questions@unitedbrokersinc.net)

---