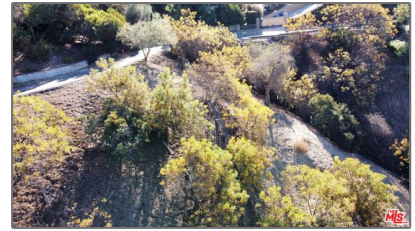
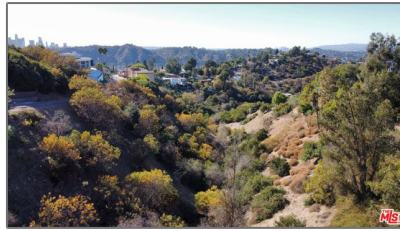
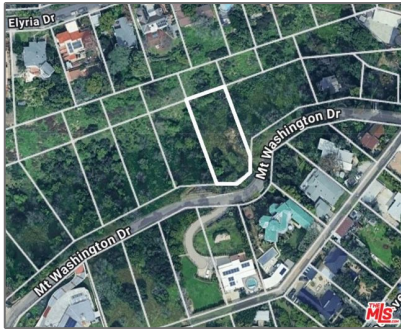


Land For Sale

- 805 Mount Washington Drive, Los Angeles,
California, 90065



Basic Details

Status:	Active
Listing Type:	For Sale
Property Type:	Land
Property SubType:	Single Family Residence
Price:	\$249,000
Price Per Square Foot:	\$20
Lot Area:	0.29 Sqft
View:	Mountain(s)
Bathrooms:	2
Country:	US
State:	California
County:	Los Angeles
City:	Los Angeles
Zipcode:	90065
Listing ID:	24466029

Features

✓ View:	Panoramic, Hills
Association:	0
Senior Community:	0
Stories:	1
AttachedGarage :	0
✓ Parking:	Driveway, Attached Carport, Covered, Parking Space, Carport, Tandem Covered
Spa:	1
Entry Level:	1
✓ Laundry:	Gas Dryer Hookup, Individual Room, Inside, Washer Hookup, Dryer Included, Washer Included, Common Area
✓ Flooring:	Wood, Laminate
✓ Window Features:	Double Pane Windows, Screens
✓ Entry Location	
✓ Spa Construction:	Community, In Ground
✓ Property Condition:	Turnkey,

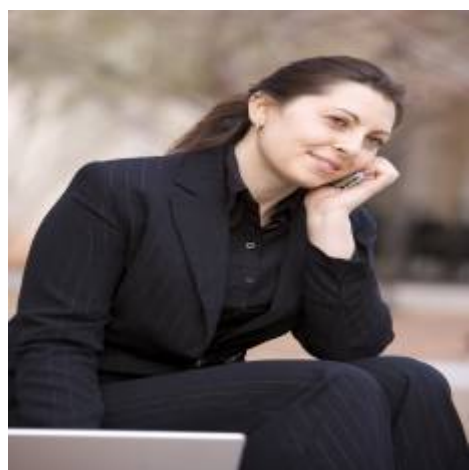
		Updated/remodeled
✓	Foundation Details:	Pier Jacks
✓	Exterior Features:	Awning(s)
✓	Interior Features:	Built-in Features, Pantry, Recessed Lighting, Ceiling Fan(s), Tandem
✓	Appliances:	Dishwasher, Electric Oven, Microwave, Refrigerator, Range Hood, Free-standing Range, Electric Cooktop
✓	Accessibility Features:	Parking, 2+ Access Exits, 32 Inch Or More Wide Doors

MLS Addon

Zoning:	LARE11
Parcel Number:	5464013006
Lot Size Square Feet:	12,516 Sqft
TaxAnnualAmount:	\$0
TaxYear:	0
✓ RoomKitchenFeatures:	Quartz Counters, Remodeled Kitchen, Self-closing Cabinet Doors, Kitchen Open To Family Room, Self-closing Drawers
✓ RoomBathroomFeatures:	Shower, Dual Shower Heads (or Multiple)
High School:	Arlington
High School 2:	Arling
Middle Or Junior School:	Miller
High School District:	Stanton Unified
Levels:	One
Taxes:	\$0

Guest House SqFt:	0 Sqft
Approx Lot SqFt:	0 Sqft
<div>✓</div> Special Listing Conditions:	Standard

Agent [Info](#)



Rina Maya
☎ 858-876-7946
☎ 800-878-0907
✉ Questions@unitedbrokersinc.net

-
