

# Residential For Sale

1,782 Sqft - 1535 Towne Avenue, Pomona, California, 91766



## Basic Details

Status:	<b>Active</b>
Listing Type:	<b>For Sale</b>
Property Type:	<b>Residential</b>
Property SubType:	<b>Single Family Residence</b>
Price:	<b>\$734,999</b>
Price Per Square Foot:	<b>\$412</b>
Square Footage:	<b>1,782 Sqft</b>
Lot Area:	<b>0.21 Sqft</b>
Year Built:	<b>1978</b>
View:	<b>Mountain(s)</b>
Bedrooms:	<b>5</b>
Bathrooms:	<b>3</b>
Bathrooms (Full):	<b>3</b>
Country:	<b>US</b>
State:	<b>California</b>
County:	<b>Los Angeles</b>
City:	<b>Pomona</b>
Zipcode:	<b>91766</b>

## Features

✓ View: [See Remarks](#)

Association: **0**

Senior Community: **0**

✓ Common Walls: [No Common Walls](#)

Stories: **1**

✓ Community Features: [Curbs](#)

Attached Garage: **1**

✓ Parking: **2.00**

✓ Fireplace: [Family room](#)

✓ Lot Features: [Front Yard, Yard](#)

Entry Level: **1**

✓ Laundry: [In Garage](#)

✓ Room Type: [Living Room, Kitchen](#)

✓ Entry Location: [Front](#)

Main Level Bathrooms: **3**

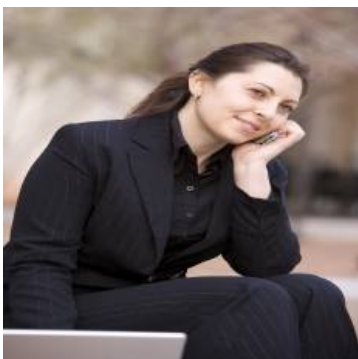
Main Level Bedrooms: **5**

Listing ID:	<b>CV24253416</b>	✓ Heating System:	Central
		✓ Cooling System:	See remarks
		✓ Water Source:	Public
		✓ Sewer:	Public Sewer

MLS [Addon](#)

Zoning:	<b>POR17200*</b>
Parcel Number:	<b>8328005050</b>
Lot Size Square Feet:	<b>9,045 Sqft</b>
Tax Annual Amount:	<b>\$0</b>
Garage Spaces:	<b>2</b>
High School:	<b>Arlington</b>
High School 2:	<b>Arling</b>
Middle Or Junior School:	<b>Miller</b>
High School District:	<b>Pomona Unified</b>
Levels:	<b>One</b>
Taxes:	<b>\$0</b>
Guest House SqFt:	<b>0 Sqft</b>
Approx Lot SqFt:	<b>0 Sqft</b>
✓ Special Listing Conditions:	<b>Standard</b>

Agent [Info](#)



Rina Maya  
 ☎ 858-876-7946  
 ☎ 800-878-0907  
 ✉ [Questions@unitedbrokersinc.net](mailto:Questions@unitedbrokersinc.net)

