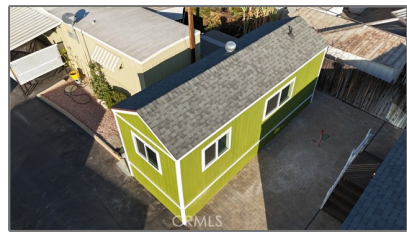
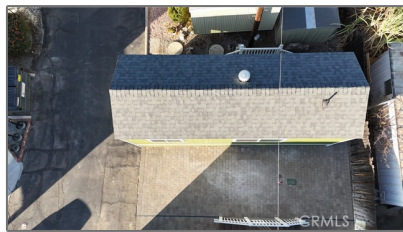


Manufactured In Park For Sale

300 Sqft - 1020 Bradbourne Avenue, Duarte, California, 91010



Basic Details

Status:	Active
Listing Type:	For Sale
Property Type:	Manufactured In Park
Price:	\$79,999
Price Per Square Foot:	\$267
Square Footage:	300 Sqft
Year Built:	2024
View:	Mountain(s)
Bedrooms:	1
Bathrooms:	1
Bathrooms (Full):	1
Country:	US
State:	California
County:	Los Angeles
City:	Duarte
Zipcode:	91010
Listing ID:	SW25001359

Features

Association:	0
Senior Community:	1
Stories:	1
✓ Community Features:	Foothills
✓ Pool:	Community
✓ Parking:	0.00
✓ Lot Features:	0-1 Unit/acre
Entry Level:	1
✓ Laundry:	Community
✓ Roofing:	Shingle
✓ Flooring:	Laminate
✓ Entry Location	
✓ Property Condition:	Turnkey
✓ Water Source:	Private
✓ Sewer:	Public Sewer

MLS [Addon](#)

Zoning:	RL
Parcel Number:	8529010018
TaxAnnualAmount:	\$0
TaxYear:	0
<input checked="" type="checkbox"/> RoomBathroomFeatures:	Shower
High School:	Arlington
High School 2:	Arling
Middle Or Junior School:	Miller
High School District:	Duarte Unified
Levels:	One
Taxes:	\$0
Guest House SqFt:	0 Sqft
Approx Lot SqFt:	0 Sqft
<input checked="" type="checkbox"/> Special Listing Conditions:	Standard

Agent [Info](#)



Rina Maya
☎ 858-876-7946
☎ 800-878-0907
✉ Questions@unitedbrokersinc.net