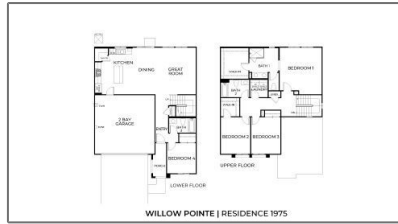


# Residential For Sale

1,975 Sqft - 31142 Water Beech Drive, Winchester, California, 92596



## Basic Details

Status:	<b>Active</b>
Listing Type:	<b>For Sale</b>
Property Type:	<b>Residential</b>
Property SubType:	<b>Single Family Residence</b>
Price:	<b>\$595,990</b>
Price Per Square Foot:	<b>\$302</b>
Square Footage:	<b>1,975 Sqft</b>
Lot Area:	<b>0.11 Sqft</b>
Year Built:	<b>2024</b>
View:	<b>Mountain(s)</b>
Bedrooms:	<b>4</b>
Bathrooms:	<b>3</b>
Bathrooms (Full):	<b>3</b>
Country:	<b>US</b>
State:	<b>California</b>
County:	<b>Riverside</b>
City:	<b>Winchester</b>
Zipcode:	<b>92596</b>
Listing ID:	<b>SW25000966</b>

## Features

Association:	<b>0</b>
Senior Community:	<b>0</b>
✓ Common Walls:	<b>No Common Walls</b>
Stories:	<b>2</b>
✓ Community Features:	<b>Sidewalks, Street Lights, Curbs</b>
✓ Amenities:	<b>Other</b>
Attached Garage:	<b>1</b>
✓ Parking:	<b>4.00</b>
✓ Parking:	<b>Driveway, Concrete, Garage Faces Front</b>
Spa:	<b>0</b>
✓ Lot Features:	<b>Front Yard, Landscaped, Sprinklers Drip System</b>
✓ Fence:	<b>Vinyl, Block</b>
✓ Security:	<b>Carbon monoxide detector(s), Smoke Detector(s), Fire Sprinkler System</b>
Entry Level:	<b>1</b>
✓ Laundry:	<b>Gas Dryer Hookup, Individual Room, Washer Hookup, Upper Level</b>

✓	Room Type:	Walk-in Closet, Kitchen, Laundry, Great Room, Walk-in Pantry, Main Floor Bedroom, Entry, Primary Suite
✓	Roofing:	Tile
✓	Flooring:	Carpet, Vinyl
✓	Window Features:	Double Pane Windows, Screens
✓	Entry Location:	Front
✓	Property Condition:	Under Construction
✓	Interior Features:	Open Floorplan, Recessed Lighting, Granite Counters, Unfurnished, Home Automation System

Main Level **1**  
Bathrooms:

Main Level	<b>1</b>
Bedrooms:	

✓	Heating System:	Forced air
✓	Cooling System:	High efficiency, Central Air
✓	Utilities:	Electricity Available, Natural Gas Available, Water Available, Water Connected, Electricity Connected, Natural Gas Connected, Underground Utilities
✓	Water Source:	Public
✓	Sewer:	Public Sewer
✓	Appliances:	Dishwasher, Disposal, Built-in Range, Gas Range, Gas Water Heater, Microwave, Tankless Water Heater, Energy Star Qualified Appliances

Lot Size Square Feet: **4,700 Sqft**

Tax Annual Amount: **\$0**

✓ Room Kitchen Features: Granite Counters, Kitchen Island, Kitchen Open To Family Room, Walk-in Pantry

✓ Room Bathroom Features: Bathtub, Walk-in Shower, Exhaust Fan(s), Shower In Tub, Low Flow Shower, Low Flow Toilet(s), Privacy Toilet Door, Double Sinks In Primary Bath

Garage Spaces: **2**

High School: **Arlington**

High School 2: **Arling**

Middle Or Junior School: **Miller**

High School District: **Perris Union High**

Levels: **Two**

✓ Eating Area: Area, Breakfast Counter / Bar

Taxes: **\$0**

Guest House SqFt: **0 Sqft**

Approx Lot SqFt: **0 Sqft**

✓ Special Listing Conditions: **Standard**

## Agent [Info](#)



Rina Maya  
☎ 858-876-7946  
☎ 800-878-0907  
✉ [Questions@unitedbrokersinc.net](mailto:Questions@unitedbrokersinc.net)

