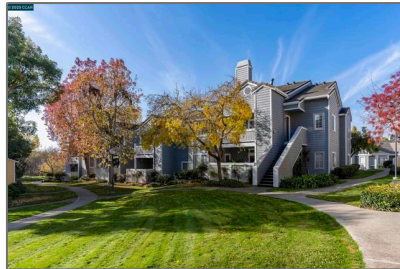


Residential For Sale

682 Sqft - 611 Waterford Pl, Pinole, California, 94564



Basic [Details](#)

Status:	Active
Listing Type:	For Sale
Property Type:	Residential
Property SubType:	Condominium
Price:	\$320,000
Price Per Square Foot:	\$469
Square Footage:	682 Sqft
Year Built:	1991
View:	Mountain(s)
Bedrooms:	1
Bathrooms:	1
Bathrooms (Full):	1
Country:	US
State:	California
County:	Contra Costa
City:	Pinole
Zipcode:	94564
Listing ID:	41081595

Features

Association:	1
✓ Pool:	In ground
✓ Amenities:	Pool, Spa/hot Tub, Clubhouse, Gym/ex Room, Maintenance Grounds, Trash, Water, Insurance
AttachedGarage :	1
✓ Parking:	2.00
✓ Parking:	Garage, Guest, Parking Space
✓ Laundry:	Dryer Included, Washer Included
✓ Roofing:	Shingle
✓ Flooring:	Tile
✓ Heating System:	Forced air
✓ Sewer:	Public Sewer

MLS Addon

Association Fee Frequency: **Monthly**

Parcel Number: **4035300716**

TaxAnnualAmount: **\$0**

Association Fee: **\$670**

✓ RoomKitchenFeatures: **Remodeled Kitchen, Stone Counters**

Garage Spaces: **1**

High School: **Arlington**

High School 2: **Arling**

Middle Or Junior School: **Miller**

Levels: **One**

Taxes: **\$0**

Guest House SqFt: **0**

Approx Lot SqFt: **0**

Virtual Tour URL Unbranded: **[Click Here](#)**

Agent Info



Rina Maya

☎ 858-876-7946

☎ 800-878-0907

✉ Questions@unitedbrokersinc.net