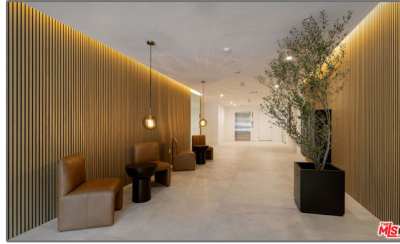


Residential Rent For Rent

2,530 Sqft - 3651 RegalPlace, Los Angeles,
California, 90068



Basic Details

Status:	Active
Listing Type:	For Rent
Property Type:	Residential Rent
Property SubType:	Condominium
Price:	\$10,000
Price Per Square Foot:	\$4
Square Footage:	2,530 Sqft
Lot Area:	0.64 Sqft
Year Built:	2024
View:	Mountain(s)
Bedrooms:	3
Bathrooms:	4
Bathrooms (Full):	3
Bathrooms (1/2):	1
Country:	US
State:	California
County:	Los Angeles
City:	Los Angeles
Zipcode:	90068

Features

✓ View:	City Lights, Hills, Valley
Association:	0
Senior Community:	0
Stories:	5
✓ Pet Policy:	Call
✓ Amenities:	Recreation Room
✓ Parking:	2.00
✓ Parking:	Side By Side
Spa:	0
✓ Security:	Automatic gate, Fire and smoke detection system, Gated community, Card/code access, 24 hour security, Fire Sprinkler System
✓ Furnished:	Unfurnished
Entry Level:	3
✓ Laundry:	Dryer Included, Washer Included
✓ Room Type:	Living Room
✓ Entry Location:	Main Level

Listing ID: **25478173**

✓ Heating System:	Central
✓ Cooling System:	Central Air
✓ Appliances:	Dishwasher, Disposal, Refrigerator
✓ Accessibility Features:	Customized Wheelchair Accessible, Other

MLS [Addon](#)

Association Fee Frequency: **Monthly**

Parcel Number: **UNAVAILABLE**

Lot Size Square Feet: **28,000 Sqft**

Tax Annual Amount: **\$0**

Association Fee: **\$1,009**

Garage Spaces: **2**

High School: **Arlington**

High School 2: **Arling**

Middle Or Junior School: **Miller**

Levels: **One**

Lease Term : **12 Months**

Taxes: **\$0**

Guest House SqFt: **0 Sqft**

Approx Lot SqFt: **0 Sqft**

Agent [Info](#)



Rina Maya

☎ 858-876-7946

☎ 800-878-0907

✉ Questions@unitedbrokersinc.net
