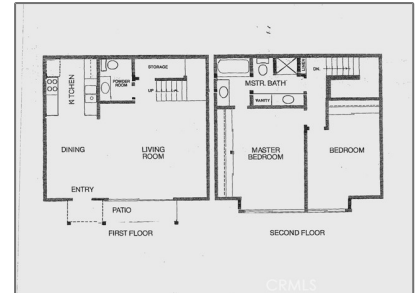
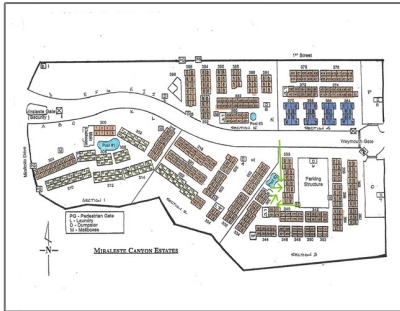


Residential For Sale

1,143 Sqft - 338 Miraleste Drive, San Pedro, California, 90732



Basic Details

Status:	Active
Listing Type:	For Sale
Property Type:	Residential
Property SubType:	Townhouse
Price:	\$499,000
Price Per Square Foot:	\$437
Square Footage:	1,143 Sqft
Year Built:	1971
View:	Mountain(s)
Bedrooms:	2
Bathrooms:	3
Bathrooms (Full):	1
Bathrooms (1/2):	1
Bathrooms (3/4):	1
Country:	US
State:	California
County:	Los Angeles
City:	San Pedro

Features

Association:	1
Senior Community:	0
✓ Common Walls:	2+ Common Walls
Stories:	2
✓ Community Features:	Sidewalks
✓ Pool:	Association
✓ Amenities:	Pool
Attached Garage:	0
✓ Parking:	4.00
✓ Parking:	Parking Space, Assigned, Structure
Spa:	0
✓ Security:	Gated community, 24 hour security, Smoke Detector(s), Gated With Attendant
✓ Patio:	Patio, Concrete
Entry Level:	1
✓ Laundry:	Community

Zipcode: **90732**

Listing ID: **PV25003050**

✓ Room Type: **Living Room, All Bedrooms Up, Primary Bedroom**

✓ Flooring: **Carpet, Vinyl**

✓ Entry Location: **Front**

✓ Interior Features: **Living Room Balcony, Storage**

Main Level **1**
Bathrooms:

✓ Heating System: **Baseboard**

✓ Cooling System: **Wall/window Unit(s)**

✓ Utilities: **Sewer Connected, Water Connected, Electricity Connected**

✓ Water Source: **Public**

✓ Sewer: **Public Sewer**

✓ Appliances: **Dishwasher, Disposal, Microwave, Electric Range**

MLS Addon

Association Fee Frequency: **Monthly**

Parcel Number: **7559039063**

Tax Annual Amount: **\$0**

Association Fee: **\$598**

Garage Spaces: **2**

High School: **Arlington**

High School 2: **Arling**

Middle Or Junior School: **Miller**

High School District: **Los Angeles Unified**

Levels: **Two**

✓ Eating Area:

Area

Taxes: **\$0**

Guest House
SqFt: **0 Sqft**


Approx Lot SqFt: **0 Sqft**


Special Listing
Conditions: **Standard**


Agent [Info](#)



Rina Maya

 858-876-7946

 800-878-0907

 Questions@unitedbrokersinc.net
