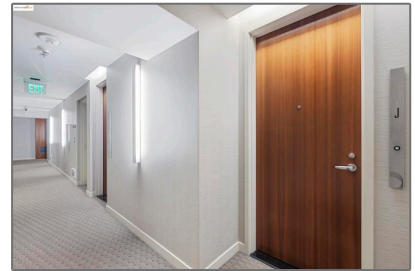
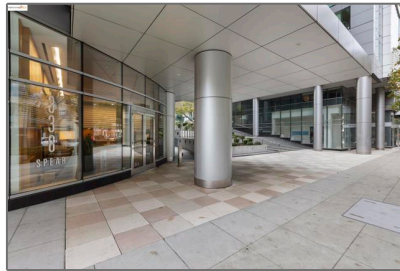
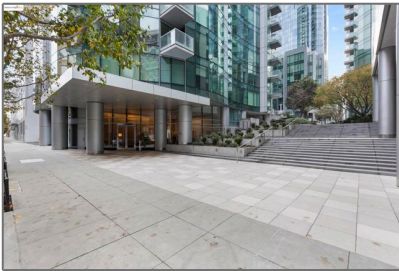


Residential For Sale

1,021 Sqft - 338 Spear, California, 94105-6167



Basic Details

Status: **Active**

Listing Type: **For Sale**

Property Type: **Residential**

Property SubType: **Condominium**

Price: **\$930,000**

Price Per Square Foot: **\$911**

Square Footage: **1,021 Sqft**

Year Built: **2009**

View: **Mountain(s)**

Bedrooms: **1**

Bathrooms: **1**

Bathrooms (Full): **1**

Country: **US**

State: **California**

County: **San Francisco**

Zipcode: **94105-6167**

Listing ID: **41081631**

Features

Association: **1**

✓ Pool: **In ground**

✓ Amenities: **Pool, Clubhouse, Other, Gym/ex Room**

AttachedGarage : **0**

✓ Parking

✓ Parking: **Parking Space**

✓ Laundry: **Dryer Included, Washer Included**

✓ Room Type: **Den**

✓ Flooring: **Carpet, Laminate**

✓ Cooling System: **Central Air**

✓ Sewer: **Public Sewer**

MLS [Addon](#)

Association Fee Frequency:	Monthly
Parcel Number:	3475399
TaxAnnualAmount:	\$0
Association Fee:	\$1,241
<input checked="" type="checkbox"/> RoomKitchenFeatures:	Kitchen Island
Garage Spaces:	1
High School:	Arlington
High School 2:	Arling
Middle Or Junior School:	Miller
Levels:	One
Taxes:	\$0
Guest House SqFt:	0 Sqft
Approx Lot SqFt:	0 Sqft
Virtual Tour URL Unbranded:	Click Here

Agent [Info](#)



Rina Maya

☎ 858-876-7946

☎ 800-878-0907

✉ Questions@unitedbrokersinc.net