

Residential For Sale

1,709 Sqft - 131 Wetherly Drive, Los Angeles, California, 90048



Basic Details

Status:	Active
Listing Type:	For Sale
Property Type:	Residential
Property SubType:	Condominium
Price:	\$1,149,995
Price Per Square Foot:	\$673
Square Footage:	1,709 Sqft
Lot Area:	0.27 Sqft
Year Built:	1982
View:	Mountain(s)
Bedrooms:	2
Bathrooms:	3
Bathrooms (Full):	1
Bathrooms (1/2):	1
Bathrooms (3/4):	1
Country:	US
State:	California
County:	Los Angeles
City:	Los Angeles

Features

Association:	1
Senior Community:	0
Stories:	0
✓ Pool:	Association
✓ Amenities:	Pool, Sauna, Controlled Access
Attached Garage:	1
✓ Parking:	0.00
✓ Parking:	Gated, Controlled Entrance
✓ Fireplace:	Living room
✓ Security:	Automatic gate, Card/code access
Entry Level:	2
✓ Laundry:	Dryer Included, Washer Included
✓ Room Type:	Living Room, Entry
✓ Heating System:	Central
✓ Cooling System:	Central Air
✓ Appliances:	Dishwasher

Zipcode: **90048**

Listing ID: **25479673**

MLS [Addon](#)

Association Fee Frequency: **Monthly**

Zoning: **LAR4**

Parcel Number: **4335005046**

Lot Size Square Feet: **11,755 Sqft**

TaxAnnualAmount: **\$0**

TaxYear: **0**

Association Fee: **\$745**

Garage Spaces: **2**

High School: **Arlington**

High School 2: **Arling**

Middle Or Junior School: **Miller**

Levels: **One**

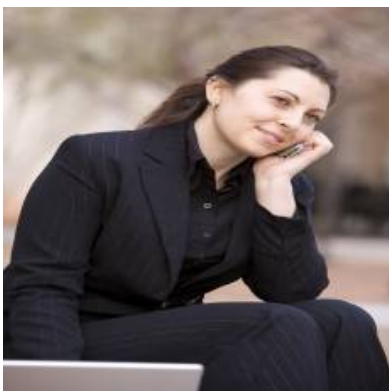
Taxes: **\$0**

Guest House SqFt: **0 Sqft**

Approx Lot SqFt: **0 Sqft**

Special Listing Conditions: **Standard**

Agent [Info](#)



Rina Maya

☎ 858-876-7946

☎ 800-878-0907

✉ Questions@unitedbrokersinc.net

