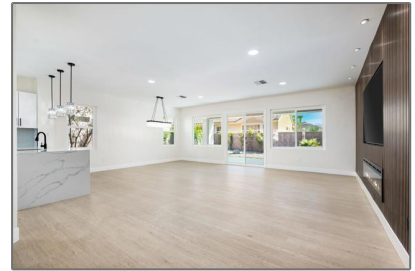
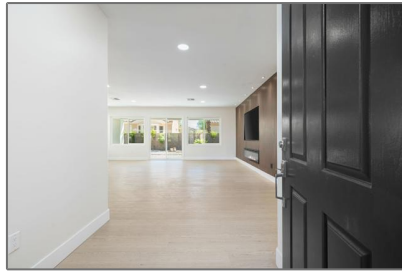
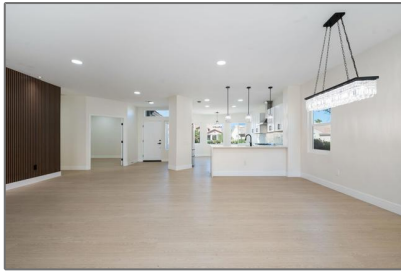


Residential For Sale

2,032 Sqft - 78509 Palm Tree Avenue, Palm Desert, California, 92211



Basic Details

Status:	Active
Listing Type:	For Sale
Property Type:	Residential
Property SubType:	Single Family Residence
Price:	\$634,000
Price Per Square Foot:	\$312
Square Footage:	2,032 Sqft
Lot Area:	0.15 Sqft
Year Built:	1997
View:	Mountain(s)
Bedrooms:	3
Bathrooms:	2
Bathrooms (Full):	2
Country:	US
State:	California
County:	Riverside
City:	Palm Desert
Zipcode:	92211
Listing ID:	219121017PS

Features

Association:	1
Senior Community:	1
Stories:	1
✓ Community Features:	Golf
✓ Amenities:	Tennis Court(s), Clubhouse, Management, Bocce Ball Court, Gym/ex Room, Banquet Facilities, Pet Rules, Golf Course, Paddle Tennis, Lake Or Pond
Attached Garage :	1
✓ Parking:	6.00
✓ Parking:	Driveway, Garage Door Opener, Golf Cart Garage
Spa:	0
✓ Fireplace:	Living room, Electric
✓ Lot Features:	Sprinkler System, Sprinklers Drip System, Sprinklers Timer, Planned Unit Development
✓ Fence:	Block
✓ Security:	Gated community, 24

hour security

✓ Room Type:

Family Room, Living Room, Great Room, Entry

✓ Flooring:

Vinyl

✓ Heating System:

Central

✓ Cooling System:

Central Air

✓ Utilities:

Cable Available

✓ Appliances:

Dishwasher, Disposal, Gas Range, Microwave, Refrigerator, Convection Oven, Gas Cooktop, Range Hood, Water Line To Refrigerator, Vented Exhaust Fan, Gas Cooking, Electric Cooking

MLS Addon

Association Fee Frequency: **Monthly**

Parcel Number: **748310035**

Lot Size Square Feet: **6,534 Sqft**

Tax Annual Amount: **\$0**

Association Fee: **\$390**

✓ Room Kitchen Features: **Quartz Counters**

Garage Spaces: **3**

High School: **Arlington**

High School 2: **Arling**

Middle Or Junior School: **Miller**

Taxes: **\$0**

Guest House SqFt: **0 Sqft**

Approx Lot SqFt: **0 Sqft**

✓ Special Listing: **Standard**

Conditions:

Agent Info



Rina Maya

📞 858-876-7946

📞 800-878-0907

✉️ Questions@unitedbrokersinc.net
