

# Residential Rent For Rent

848 Sqft - 32505 Candlewood Drive, Cathedral City, California, 92234



## Basic Details

Status:	<b>Active</b>
Listing Type:	<b>For Rent</b>
Property Type:	<b>Residential Rent</b>
Property SubType:	<b>Condominium</b>
Price:	<b>\$1,900</b>
Price Per Square Foot:	<b>\$2</b>
Square Footage:	<b>848 Sqft</b>
Lot Area:	<b>0.02 Sqft</b>
Year Built:	<b>1990</b>
View:	<b>Mountain(s)</b>
Bedrooms:	<b>2</b>
Bathrooms:	<b>2</b>
Bathrooms (Full):	<b>2</b>
Country:	<b>US</b>
State:	<b>California</b>
County:	<b>Riverside</b>
City:	<b>Cathedral City</b>
Zipcode:	<b>92234</b>
Listing ID:	<b>219116919DA</b>

## Features

✓ View:	<b>Park/greenbelt, Peek-a-boo, Pool</b>
Association:	<b>1</b>
Senior Community:	<b>0</b>
Stories:	<b>2</b>
✓ Pool:	<b>In ground, Community, Electric Heat</b>
✓ Amenities:	<b>Pet Rules, Controlled Access</b>
Attached Garage :	<b>0</b>
✓ Parking	
✓ Parking:	<b>Assigned, Detached Carport, Unassigned</b>
Spa:	<b>1</b>
✓ Security:	<b>Automatic gate, Gated community, Card/code access, Security lights</b>
✓ Furnished:	<b>Unfurnished</b>
✓ Spa Construction:	<b>Community, Heated, In Ground</b>
✓ Heating System:	<b>Central</b>
✓ Sewer:	

Unknown

✓ Appliances:

Electric Oven,  
Microwave, Refrigerator,  
Electric Cooktop, Electric  
Range

## MLS Addon

Association Fee Frequency: **Monthly**

Parcel Number: **680192037**

Lot Size Square Feet: **871 Sqft**

Tax Annual Amount: **\$0**

Association Fee: **\$405**

High School: **Cathedral City**

High School 2: **Catcit**

Middle Or Junior School: **Miller**

Elementary School: **Agua Caliente**

High School District: **Palm Springs Unified**

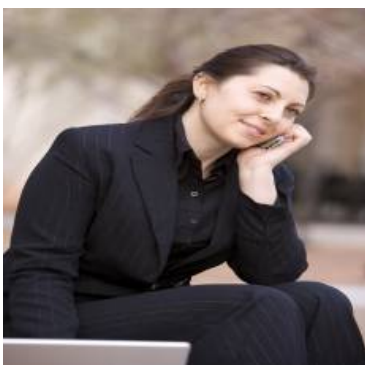
Levels: **Two**

Taxes: **\$0**

Guest House SqFt: **0 Sqft**

Approx Lot SqFt: **0 Sqft**

## Agent Info



Rina Maya

☎ 858-876-7946

☎ 800-878-0907

✉ Questions@unitedbrokersinc.net

