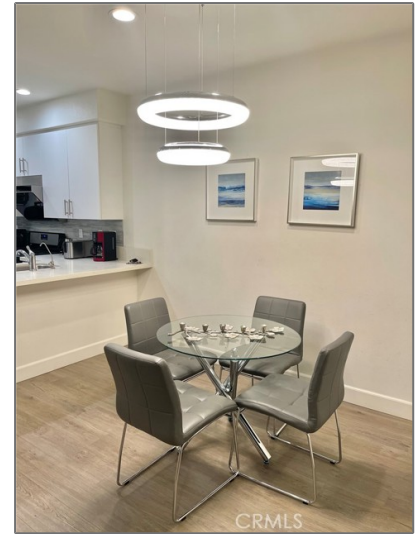
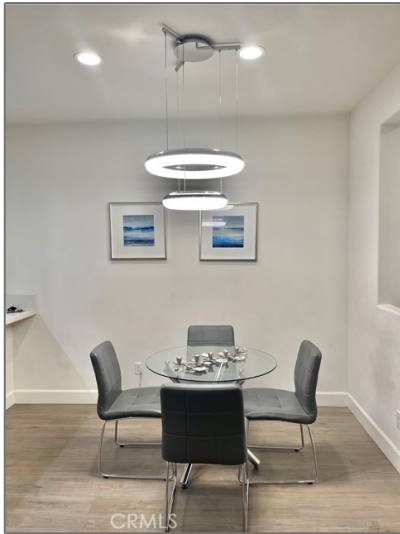


# Residential Rent For Rent

1,300 Sqft - 5657 Mcculloch Avenue, Temple City, California, 91780



## Basic Details

Status:	<b>Active</b>
Listing Type:	<b>For Rent</b>
Property Type:	<b>Residential Rent</b>
Property SubType:	<b>Condominium</b>
Price:	<b>\$3,950</b>
Price Per Square Foot:	<b>\$3</b>
Square Footage:	<b>1,300 Sqft</b>
Lot Area:	<b>0.33 Sqft</b>
Year Built:	<b>2017</b>
View:	<b>Mountain(s)</b>
Bedrooms:	<b>3</b>
Bathrooms:	<b>3</b>
Bathrooms (Full):	<b>3</b>
Country:	<b>US</b>
State:	<b>California</b>

## Features

Association:	<b>1</b>
Senior Community:	<b>0</b>
✓ Common Walls:	<b>2+ Common Walls</b>
Stories:	<b>2</b>
✓ Pet Policy:	<b>Call</b>
✓ Community Features:	<b>Sidewalks</b>
Attached Garage :	<b>1</b>
✓ Parking:	<b>2.00</b>
✓ Furnished:	<b>Furnished</b>
Entry Level:	<b>1</b>
✓ Laundry:	<b>Electric Dryer Hookup</b>
✓ Room Type:	<b>All Bedrooms Up</b>
✓ Flooring:	<b>Wood</b>
✓ Entry Location	

County:	<b>Los Angeles</b>	✓ Heating System:	Central
City:	<b>Temple City</b>	✓ Cooling System:	Central Air
Zipcode:	<b>91780</b>	✓ Water Source:	Public
Listing ID:	<b>WS24212314</b>	✓ Sewer:	Public Sewer

### MLS [Addon](#)

Zoning:	<b>TCR4*</b>
Parcel Number:	<b>8573011053</b>
Lot Size Square Feet:	<b>14,260</b>
Tax Annual Amount:	<b>\$0</b>
Garage Spaces:	<b>2</b>
High School:	<b>Arlington</b>
High School 2:	<b>Arling</b>
Middle Or Junior School:	<b>Miller</b>
High School District:	<b>El Monte Union High</b>
Levels:	<b>Two</b>
Taxes:	<b>\$0</b>
Guest House SqFt:	<b>0</b>
Approx Lot SqFt:	<b>0</b>

### Agent [Info](#)



Rina Maya  
 ☎ 858-876-7946  
 ☎ 800-878-0907  
 ✉ [Questions@unitedbrokersinc.net](mailto:Questions@unitedbrokersinc.net)

