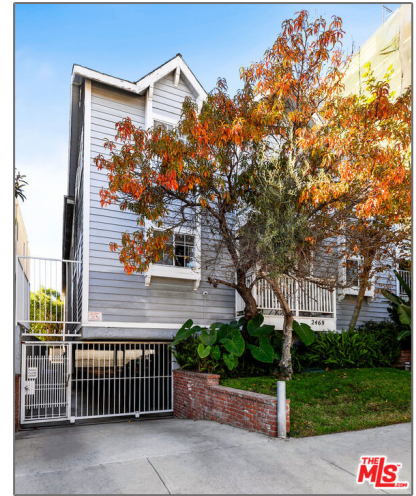
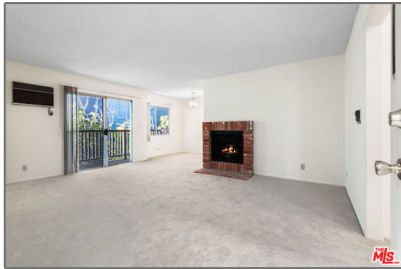


Residential Rent For Rent

1,000 Sqft - 2469 Purdue Avenue, Los Angeles, California, 90064



Basic Details

Status:	Active
Listing Type:	For Rent
Property Type:	Residential Rent
Property SubType:	Condominium
Price:	\$3,195
Price Per Square Foot:	\$3
Square Footage:	1,000 Sqft
Lot Area:	0.18 Sqft
Year Built:	1988
View:	Mountain(s)
Bedrooms:	2
Bathrooms:	2
Bathrooms (Full):	2
Country:	US
State:	California

Features

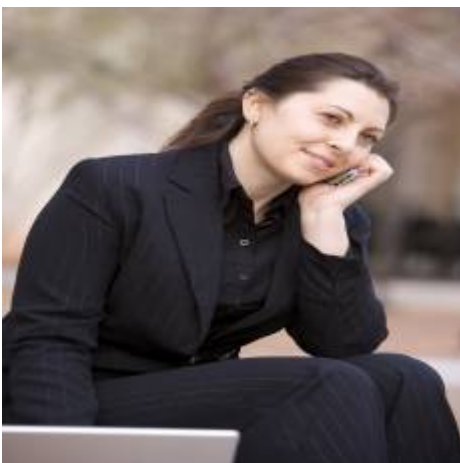
Association:	0
Senior Community:	0
Stories:	2
✓ Parking:	2.00
✓ Parking:	Controlled Entrance, Community Structure
✓ Fireplace:	Gas
✓ Furnished:	Unfurnished
✓ Laundry:	Community
✓ Flooring:	Carpet
✓ Heating System:	electric
✓ Cooling System:	Wall/window Unit(s)
✓ Appliances:	Microwave, Refrigerator

County:	Los Angeles
City:	Los Angeles
Zipcode:	90064
Listing ID:	25488755

MLS [Addon](#)

Zoning:	LAR3
Parcel Number:	4260037014
Lot Size Square Feet:	7,837 Sqft
TaxAnnualAmount:	\$0
High School:	Arlington
High School 2:	Arling
Middle Or Junior School:	Miller
Levels:	One
Lease Term :	12 Months
Taxes:	\$0
Guest House SqFt:	0 Sqft
Approx Lot SqFt:	0 Sqft

Agent [Info](#)



Rina Maya

📞 858-876-7946

📞 800-878-0907

✉ Questions@unitedbrokersinc.net
