

Manufactured In Park For Sale

1,392 Sqft - 32520 San Miguelito Drive, Thousand Palms, California, 92276



Basic Details

Status: **Active**

Listing Type: **For Sale**

Property Type: **Manufactured In Park**

Price: **\$185,000**

Price Per Square Foot: **\$133**

Square Footage: **1,392 Sqft**

Lot Area: **0.09 Sqft**

Year Built: **1969**

View: **Mountain(s)**

Bedrooms: **2**

Bathrooms: **2**

Bathrooms (Full): **2**

Country: **US**

State: **California**

County: **Riverside**

City: **Thousand Palms**

Zipcode: **92276**

Listing ID: **SW25033124**

Features

✓ View: **Mountain(s)**

Association: **1**

Senior Community: **1**

Stories: **1**

✓ Community Features: **Dog Park**

✓ Pool: **Community**

✓ Amenities: **Pool, Spa/hot Tub, Banquet Facilities, Pet Rules, Dog Park, Pickleball**

✓ Parking: **2.00**

✓ Parking: **Driveway, Carport, Concrete**

Spa: **1**

✓ Lot Features: **Close To Clubhouse**

✓ Security: **Smoke Detector(s)**

✓ Patio: **Patio**

✓ Electric: **Electricity - On Property, Standard**

Entry Level:

1

✓	Laundry:	Inside, Gas & Electric Dryer Hookup, Washer Included
✓	Room Type:	Living Room, Kitchen, Laundry, Main Floor Bedroom, All Bedrooms Down, Main Floor Primary Bedroom
✓	Roofing:	Composition
✓	Flooring:	Carpet, Laminate
✓	Window Features:	Blinds
✓	Entry Location:	Front
✓	Spa Construction:	Community
✓	Interior Features:	Ceiling Fan(s), Furnished
✓	Heating System:	Central
✓	Cooling System:	Central Air
✓	Utilities:	Sewer Connected, Water Connected, Electricity Connected, Natural Gas Connected, Phone Available, Cable Connected
✓	Water Source:	Public
✓	Sewer:	Public Sewer
✓	Appliances:	Dishwasher, Gas Water Heater, Refrigerator, Convection Oven, Gas Cooktop

MLS Addon

Association Fee
Frequency: **Monthly**

Parcel Number: **693112005**

Lot Size Square
Feet: **3,920 Sqft**

TaxAnnualAmou **\$0**

nt:

TaxYear: 0

Association Fee 2: \$150

Association Fee: \$215

Association Fee 2 Frequency: Annually

✓ RoomBathroomFeatures: Shower In Tub, Formica Counters

High School: Arlington

High School 2: Arling

Middle Or Junior School: Miller

High School District: Desert Sands Unified

Levels: One

Taxes: \$0

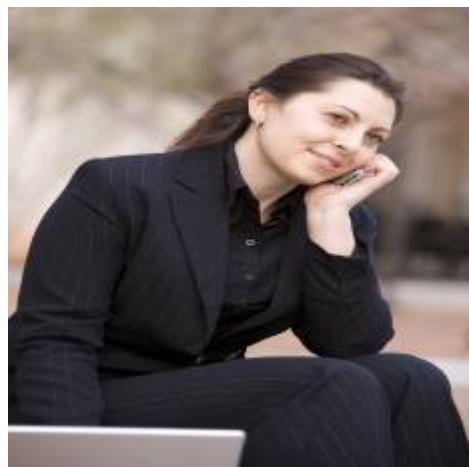
Guest House SqFt: 0 Sqft

Approx Lot SqFt: 0 Sqft

✓ Special Listing Conditions: Standard

Virtual Tour URL Unbranded: [Click Here](#)

Agent [Info](#)



Rina Maya
📞 858-876-7946
📞 800-878-0907
✉ Questions@unitedbrokersinc.net
