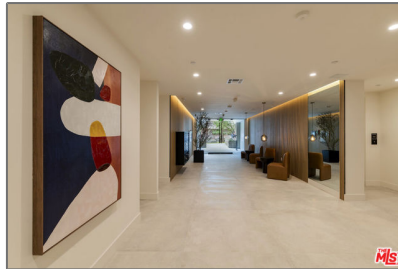


Residential For Sale

1,640 Sqft - 3649 RegalPlace, Los Angeles,
California, 90068



Basic Details

Status: **Active**

Listing Type: **For Sale**

Property Type: **Residential**

Property SubType: **Condominium**

Price: **\$1,300,000**

Price Per Square Foot: **\$793**

Square Footage: **1,640 Sqft**

Lot Area: **0.64 Sqft**

Year Built: **2024**

View: **Mountain(s)**

Bedrooms: **3**

Bathrooms: **2**

Bathrooms (Full): **2**

Country: **US**

State: **California**

Features

✓ View: **City Lights, Hills, Valley**

Association: **1**

Senior Community: **0**

✓ Common Walls: **1 Common Wall**

Stories: **5**

✓ Parking: **2.00**

✓ Parking: **Side By Side**

Spa: **0**

✓ Security: **Automatic gate, Fire and smoke detection system, Gated community, Card/code access, 24 hour security, Fire Sprinkler System**

Entry Level: **1**

✓ Laundry: **Dryer Included, Washer Included**

✓ Room Type:

County:	Los Angeles				Living Room
City:	Los Angeles	✓	Entry Location:		Front Side
Zipcode:	90068	✓	Interior Features:		Recessed Lighting
Listing ID:	25498877	✓	Heating System:		Central
		✓	Cooling System:		Central Air
		✓	Appliances:		Dishwasher, Disposal, Microwave, Refrigerator, Oven
		✓	Accessibility Features:		Customized Wheelchair Accessible, Other

MLS Addon

Association Fee Frequency:	Monthly
Parcel Number:	UNAVAILABLE
Lot Size Square Feet:	28,000 Sqft
TaxAnnualAmount:	\$0
Association Fee:	\$787
✓ RoomKitchenFeatures:	Kitchen Island
✓ RoomBathroomFeatures:	Shower In Tub
High School:	Arlington
High School 2:	Arling
Middle Or Junior School:	Miller
Levels:	One
✓ EatingArea:	Dining Room
Taxes:	\$0
Guest House SqFt:	0 Sqft
Approx Lot SqFt:	0 Sqft
✓ Special Listing Conditions:	Standard



Rina Maya
☎ 858-876-7946
☎ 800-878-0907
✉ Questions@unitedbrokersinc.net