

Manufactured In Park For Sale

1,906 Sqft - 34735 Double Diamond Drive,
Thousand Palms, California, 92276



Basic Details

Status: **Active**

Listing Type: **For Sale**

Property Type: **Manufactured In Park**

Price: **\$270,000**

Price Per Square Foot: **\$142**

Square Footage: **1,906 Sqft**

Lot Area: **0.13 Sqft**

Year Built: **1981**

View: **Mountain(s)**

Bedrooms: **2**

Bathrooms: **2**

Bathrooms (Full): **2**

Country: **US**

State: **California**

County: **Riverside**

City: **Thousand Palms**

Zipcode: **92276**

Listing ID: **CV25038643**

Features

✓ View: **Golf Course**

Association: **1**

Senior Community: **1**

Stories: **1**

✓ Pet Policy: **Call**

✓ Community Features: **Golf, Curbs**

✓ Pool: **In ground, Community**

✓ Amenities: **Pool, Spa/hot Tub, Tennis Court(s), Clubhouse, Barbecue, Gym/ex Room, Golf Course**

Attached Garage: **0**

✓ Parking: **2.00**

✓ Parking: **Driveway, Garage**

Spa: **1**

✓ Lot Features: **Front Yard, 0-1 Unit/acre**

✓ Fence: **Block**

✓ Security: **Gated with guard**

✓	Patio:	Covered, Patio, Concrete
✓	Inclusions:	Linens, Beach Chairs, Washer/dryer/breakfast Nook Table
Entry Level: 1		
✓	Laundry:	Individual Room, Dryer Included, Washer Included
✓	Room Type:	Office, Primary Suite
✓	Roofing:	Composition, Shingle
✓	Flooring:	Carpet
✓	Window Features:	Double Pane Windows
✓	Entry Location:	Front
✓	Spa Construction:	Community, In Ground
✓	Foundation Details:	Permanent
✓	Interior Features:	High Ceilings, Formica Counters
✓	Heating System:	Central, natural gas
✓	Cooling System:	Central Air, Wall/window Unit(s)
✓	Utilities:	Sewer Connected, Cable Connected
✓	Water Source:	Public
✓	Sewer:	Public Sewer
✓	Appliances:	Dishwasher, Double Oven, Refrigerator, Gas Cooktop, Water Softener

MLS Addon

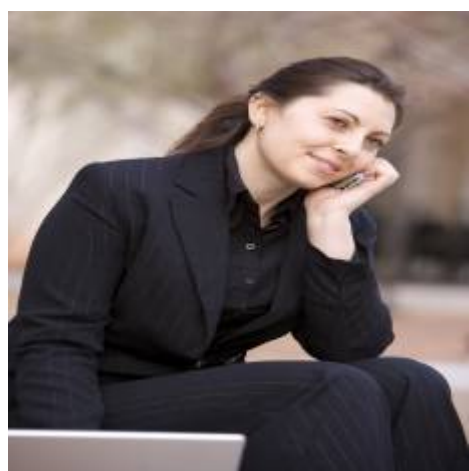
Association Fee **Monthly**
Frequency:

Parcel Number: **694020005**

Lot Size Square Feet: **5,663 Sqft**

TaxAnnualAmount:	\$0
Association Fee:	\$363
<input checked="" type="checkbox"/> RoomBathroomFeatures:	Double Sinks In Primary Bath
Garage Spaces:	2
High School:	Arlington
High School 2:	Arling
Middle Or Junior School:	Miller
High School District:	Palm Springs Unified
Levels:	One
Taxes:	\$0
Guest House SqFt:	0 Sqft
Approx Lot SqFt:	0 Sqft
<input checked="" type="checkbox"/> Special Listing Conditions:	Standard

Agent [Info](#)



Rina Maya
 858-876-7946
 800-878-0907
 Questions@unitedbrokersinc.net