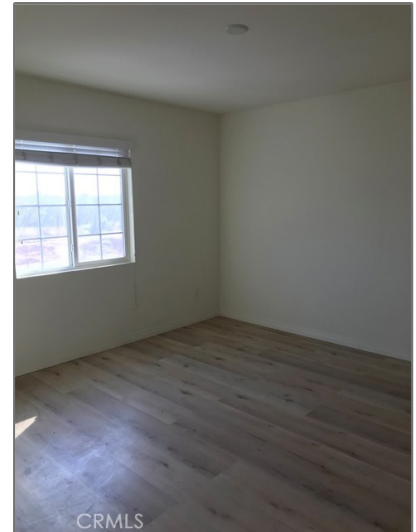


Residential Rent For Rent

256 Sqft - 12045 tributary way, Jurupa Valley,
California, 91752



Basic Details

Status:	Active
Listing Type:	For Rent
Property Type:	Residential Rent
Property SubType:	Apartment
Price:	\$900
Price Per Square Foot:	\$4
Square Footage:	256 Sqft
Lot Area:	0.01 Sqft
Year Built:	2017
View:	Mountain(s)
Bedrooms:	1
Bathrooms:	1
Bathrooms (Full):	1
Country:	CA
State:	California

Features

✓ View:	Hills
Association:	1
Senior Community:	0
✓ Common Walls:	1 Common Wall
Stories:	2
✓ Community Features:	Golf
✓ Parking:	0.00
Spa:	0
✓ Lot Features:	2-5 Units/acre
✓ Furnished:	Unfurnished
Entry Level:	1
✓ Room Type:	All Bedrooms Up
✓ Entry Location	
Main Level Bathrooms:	1

County:	Riverside
City:	Jurupa Valley
Zipcode:	91752
Listing ID:	TR25034674

Main Level	1
Bedrooms:	
✓ Heating System:	Central
✓ Cooling System:	Central Air
✓ Utilities:	Water Available, Water Connected
✓ Water Source:	Public
✓ Sewer:	Public Sewer

MLS [Addon](#)

Parcel Number:	157270023
Lot Size Square Feet:	256 Sqft
TaxAnnualAmount:	\$0
High School:	Arlington
High School 2:	Arling
Middle Or Junior School:	Miller
High School District:	Corcoran Joint Unified
Levels:	Two
Lease Term :	12 Months
Taxes:	\$0
Guest House SqFt:	0 Sqft
Approx Lot SqFt:	0 Sqft

Agent [Info](#)



Rina Maya

☎ 858-876-7946

☎ 800-878-0907

✉ Questions@unitedbrokersinc.net
