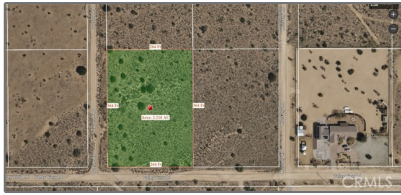


Land For Sale

- 0 Valley ViewRoad, Apple Valley, California,
92308



Basic Details

Status: **Active**

Listing Type: **For Sale**

Property Type: **Land**

Property SubType: **Single Family Residence**

Price: **\$75,000**

Price Per Square Foot: **\$1**

Lot Area: **2.23 Sqft**

View: **Mountain(s)**

Bathrooms: **4**

Country: **US**

State: **California**

County: **San Bernardino**

City: **Apple Valley**

Zipcode: **92308**

Listing ID: **IV25046417**

Features

✓ View: **Mountain(s), Panoramic, Hills, Rocks, Desert**

Association: **0**

Senior Community: **0**

✓ Common Walls: **No Common Walls**

Stories: **2**

✓ Community Features: **Mountainous, Rural, Foothills**

AttachedGarage: **1**

:

✓ Parking: **Garage Door Opener, Garage, Concrete, Private, Street, Rv Access/parking, Electric Vehicle Charging Station(s)**

✓ Lot Features: **Level, Lot Over 40000 Sqft, 2-5 Units/acre, Desert Back, Desert Front**

Entry Level: **1**

✓ Laundry: **Gas Dryer Hookup, Washer Hookup, Gas & Electric Dryer Hookup, In Garage, Stackable**

✓ Entry Location: **Driveway / Front Door, Skyline Mobile Park S Side Of Pch Entrance**

✓	Property Condition:	Turnkey, Updated/remodeled
✓	Foundation Details:	Slab
✓	Interior Features:	Built-in Features, Open Floorplan, Pantry, Recessed Lighting, Wainscoting, Wet Bar, Wired For Data, Wired For Sound, In-law Floorplan, Balcony, Storage, Bar, Dry Bar, 2 Staircases, Quartz Counters

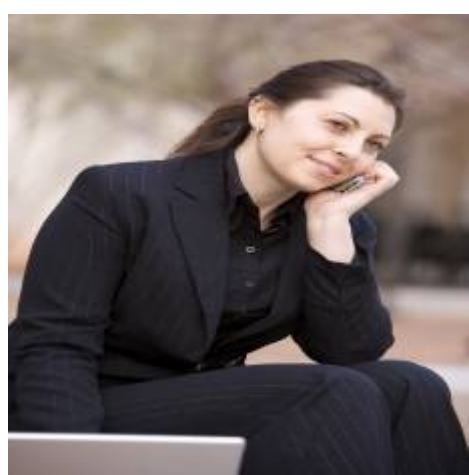
Main Level Bathrooms:		1
✓	Utilities:	Electricity Available, Natural Gas Available, Water Available, Cable Available, Phone Available, Sewer Available
✓	Appliances:	Dishwasher, Disposal, Double Oven, 6 Burner Stove, Microwave, Refrigerator, Gas Oven, Range Hood, Energy Star Qualified Appliances

MLS Addon

Zoning:	RL
Parcel Number:	0435227060000
Lot Size Square Feet:	97,138.80 Sqft
TaxAnnualAmount:	\$0
TaxYear:	0
✓ RoomBathroomFeatures:	Shower, Bathtub, Walk-in Shower, Exhaust Fan(s), Linen Closet/storage, Remodeled, Upgraded, Double Sinks In Bath(s), Dual Shower Heads (or Multiple), Vanity Area, Main Floor Full Bath, Double Sinks In Primary Bath
High School:	Arlington

High School 2:	Arling
Middle Or Junior School:	Miller
High School District:	Newport Mesa Unified
Levels:	Two
<div>✓ EatingArea:</div>	<div>Dining Room, Area, Breakfast Counter / Bar, Family Kitchen</div>
Taxes:	\$0
Guest House SqFt:	0 Sqft
Approx Lot SqFt:	0 Sqft
<div>✓ Special Listing Conditions:</div>	<div>Standard</div>

Agent [Info](#)



Rina Maya
☎ 858-876-7946
☎ 800-878-0907
✉ Questions@unitedbrokersinc.net

-