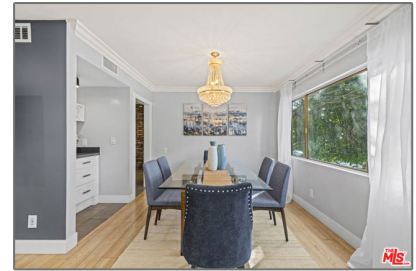


# Residential For Sale

1,561 Sqft - 910 Holt Avenue, Los Angeles,  
California, 90035



## Basic Details

Status:	<b>Active</b>
Listing Type:	<b>For Sale</b>
Property Type:	<b>Residential</b>
Property SubType:	<b>Condominium</b>
Price:	<b>\$895,000</b>
Price Per Square Foot:	<b>\$573</b>
Square Footage:	<b>1,561 Sqft</b>
Lot Area:	<b>0.28 Sqft</b>
Year Built:	<b>1970</b>
View:	<b>Mountain(s)</b>
Bedrooms:	<b>2</b>
Bathrooms:	<b>2</b>
Bathrooms (Full):	<b>2</b>
Country:	<b>US</b>
State:	<b>California</b>
County:	<b>Los Angeles</b>
City:	<b>Los Angeles</b>
Zipcode:	<b>90035</b>
Listing ID:	<b>25518997</b>

## Features

Association:	<b>1</b>
Senior Community:	<b>0</b>
Stories:	<b>1</b>
✓ Parking:	<b>2.00</b>
✓ Parking:	<b>Tandem Garage</b>
✓ Fireplace:	<b>Living room</b>
Entry Level:	<b>1</b>
✓ Laundry:	<b>Community</b>
✓ Flooring:	<b>Tile, Laminate</b>
✓ Heating System:	<b>Central</b>
✓ Cooling System:	<b>Central Air</b>
✓ Appliances:	<b>Dishwasher, Disposal, Microwave, Refrigerator</b>

## MLS Addon

---

Association Fee Frequency: **Monthly**

Zoning: **LAR3**

Parcel Number: **4333022026**

Lot Size Square Feet: **12,019 Sqft**

TaxAnnualAmount: **\$0**

Association Fee: **\$260**

High School: **Arlington**

High School 2: **Arling**

Middle Or Junior School: **Miller**

Levels: **One**

Taxes: **\$0**

Guest House SqFt: **0 Sqft**

Approx Lot SqFt: **0 Sqft**

Special Listing Conditions: [Standard](#)

## Agent Info

---



Rina Maya

☎ 858-876-7946

☎ 800-878-0907

✉ [Questions@unitedbrokersinc.net](mailto:Questions@unitedbrokersinc.net)

---