

# Residential For Sale

1,327 Sqft - 45522 AndaleAvenue, Lancaster,  
California, 93535



## Basic Details

Status:	Active
Listing Type:	For Sale
Property Type:	Residential
Property SubType:	Single Family Residence
Price:	\$440,000
Price Per Square Foot:	\$332
Square Footage:	1,327 Sqft
Lot Area:	0.15 Sqft
Year Built:	1957
View:	Mountain(s)
Bedrooms:	3
Bathrooms:	2
Bathrooms (Full):	2
Country:	US
State:	California
County:	Los Angeles
City:	Lancaster
Zipcode:	93535
Listing ID:	SR25080931

## Features

✓ View:	Neighborhood
Association:	0
Senior Community:	0
✓ Common Walls:	No Common Walls
Stories:	1
✓ Community Features:	Street Lights, Park
AttachedGarage :	1
✓ Parking:	6.00
✓ Parking:	Gated, Driveway, Auto Driveway Gate, Direct Garage Access, Garage - Single Door, Garage Door Opener, Garage, Garage Faces Side, Concrete, Rv Access/parking, Rv Gated
✓ Lot Features:	Back Yard, Front Yard, 0-1 Unit/acre, Sprinkler System, Landscaped, Sprinklers Drip System, Level, Paved, Gentle Sloping, Garden, Sprinklers In Rear, Desert Front
✓ Fence:	Wrought iron, Wood, Good condition, Block

✓	Security:	Automatic gate, Fire and smoke detection system, Carbon monoxide detector(s), Security lights, Wired for alarm system, Security system, Smoke Detector(s), Closed Circuit Camera(s)
---	-----------	---

✓	Patio:	Covered, Concrete
---	--------	-------------------

✓	Electric:	220 Volts, 220 Volts In Laundry, 220 Volts In Garage, 220 Volts In Kitchen
---	-----------	--

✓	Inclusions:	Dishwasher, Oven/stove, Mini Fridge, Microwave.
---	-------------	---

Entry Level:	<b>1</b>
--------------	----------

✓	Laundry:	Gas Dryer Hookup, Individual Room
---	----------	-----------------------------------

✓	Room Type:	Living Room, Kitchen, Laundry, Attic, All Bedrooms Down, Entry
---	------------	--

✓	Roofing:	Shingle
---	----------	---------

✓	Flooring:	Laminate
---	-----------	----------

✓	Window Features:	Blinds
---	------------------	--------

✓	Entry Location:	Front
---	-----------------	-------

✓	Property Condition:	Turnkey, Updated/remodeled, Additions/alterations
---	---------------------	---

✓	Foundation Details:	Permanent
---	---------------------	-----------

✓	Interior Features:	Open Floorplan, Recessed Lighting, Ceiling Fan(s), Copper Plumbing Full, Bar, Quartz Counters
---	--------------------	---

Main Level Bathrooms:	<b>2</b>
-----------------------	----------

Main Level Bedrooms:	<b>3</b>
----------------------	----------

✓	Heating System:	Central, Solar
---	-----------------	----------------

✓	Cooling System:	Gas, Central Air, Energy Star Qualified Equipment
---	-----------------	---

✓	Utilities:	Water Available, Cable Available, Electricity Connected, Natural Gas Connected, Phone Available, Cable Connected
✓	Water Source:	Public
✓	Sewer:	Public Sewer
✓	Appliances:	Dishwasher, Gas Range, Gas Water Heater, Microwave, Gas Oven

## MLS Addon

Zoning:	<b>LRRA6500*</b>
Parcel Number:	<b>3176014036</b>
Lot Size Square Feet:	<b>6,534 Sqft</b>
✓ Exclusions:	Washer, Dryer, Fridge
TaxAnnualAmount:	<b>\$0</b>
✓ RoomKitchenFeatures:	Pots & Pan Drawers, Remodeled Kitchen
✓ RoomBathroomFeatures:	Shower, Bathtub, Remodeled, Shower In Tub, Quartz Counters
Garage Spaces:	<b>2</b>
High School:	<b>Arlington</b>
High School 2:	<b>Arling</b>
Middle Or Junior School:	<b>Miller</b>
High School District:	<b>Antelope Valley Union</b>
Levels:	<b>One</b>
✓ EatingArea:	Dining Room, Breakfast Counter / Bar
Taxes:	<b>\$0</b>
Guest House SqFt:	<b>0 Sqft</b>

Approx Lot SqFt: **0 Sqft**

✓

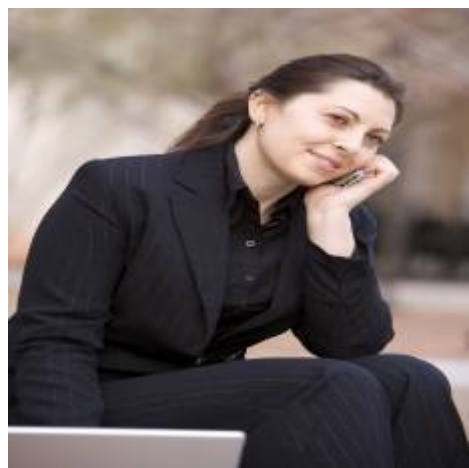
Special Listing  
Conditions:

Standard

Virtual Tour [Click Here](#)  
URL Unbranded:

Agent [Info](#)

---



Rina Maya  
☎ 858-876-7946  
☎ 800-878-0907  
✉ [Questions@unitedbrokersinc.net](mailto:Questions@unitedbrokersinc.net)

-

---