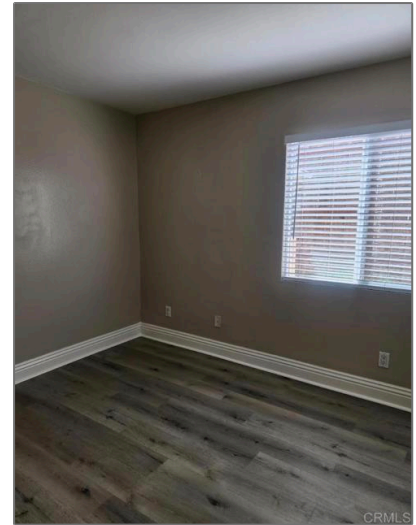
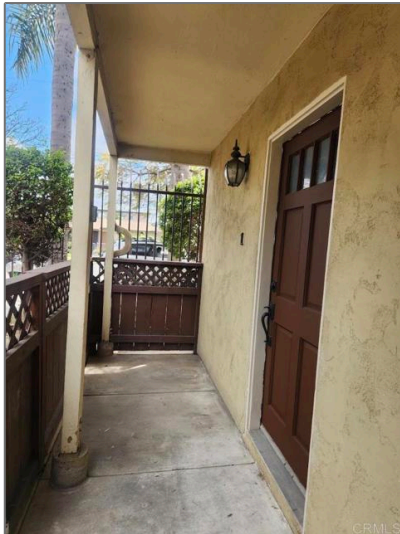


# Residential For Sale

378 Sqft - 905 4th Avenue, National City,  
California, 91950



## Basic Details

Status:	<b>Coming Soon</b>
Listing Type:	<b>For Sale</b>
Property Type:	<b>Residential</b>
Property SubType:	<b>Condominium</b>
Price:	<b>\$315,000</b>
Price Per Square Foot:	<b>\$833</b>
Square Footage:	<b>378 Sqft</b>
Year Built:	<b>1996</b>
View:	<b>Mountain(s)</b>
Bedrooms:	<b>1</b>
Bathrooms:	<b>1</b>
Bathrooms (Full):	<b>1</b>
Country:	<b>US</b>
State:	<b>California</b>
County:	<b>San Diego</b>

## Features

Association:	<b>1</b>
Senior Community:	<b>0</b>
✓ Common Walls:	<b>1 Common Wall, End Unit</b>
Stories:	<b>1</b>
✓ Community Features:	<b>Curbs</b>
✓ Pool:	<b>Community</b>
✓ Amenities:	<b>Pool, Clubhouse, Trash, Hot Water, Insurance</b>
AttachedGarage :	<b>0</b>
✓ Parking	
Spa:	<b>0</b>
✓ Inclusions:	<b>Dishwasher, Stove/ Oven</b>
Entry Level:	<b>1</b>
✓ Laundry:	<b>Common Area, Community</b>

City:	<b>National City</b>
Zipcode:	<b>91950</b>
Listing ID:	<b>PTP2502745</b>

✓	Room Type:	Living Room, Kitchen, Primary Suite
✓	Entry Location	
✓	Cooling System:	Whole house fan
✓	Water Source:	See Remarks

## MLS [Addon](#)

Association Fee Frequency:	<b>Monthly</b>
Zoning:	<b>R-1 - SINGLE</b>
Parcel Number:	<b>5561805401</b>
TaxAnnualAmount:	<b>\$0</b>
Association Fee:	<b>\$220</b>
High School:	<b>Arlington</b>
High School 2:	<b>Arling</b>
Middle Or Junior School:	<b>Miller</b>
High School District:	<b>Sweetwater Union</b>
Levels:	<b>One</b>
Taxes:	<b>\$0</b>
Guest House SqFt:	<b>0</b>
Approx Lot SqFt:	<b>0</b>
✓ Special Listing Conditions:	<b>Standard</b>

## Agent [Info](#)



Rina Maya  
 ☎ 858-876-7946  
 ☎ 800-878-0907  
 ✉ [Questions@unitedbrokersinc.net](mailto:Questions@unitedbrokersinc.net)

