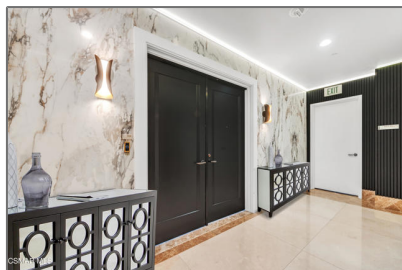


Residential Rent For Rent

2,500 Sqft - 1 CenturyDrive, Los Angeles,
California, 90067



Basic Details

Status: **Active**

Listing Type: **For Rent**

Property Type: **Residential Rent**

Property SubType: **Condominium**

Price: **\$20,000**

Price Per Square Foot: **\$8**

Square Footage: **2,500 Sqft**

Lot Area: **3.71 Sqft**

Year Built: **2010**

View: **Mountain(s)**

Bedrooms: **2**

Bathrooms: **3**

Bathrooms (Full): **3**

Country: **US**

State: **California**

County: **Los Angeles**

City: **Los Angeles**

Zipcode: **90067**

Features

✓ View: **City Lights, Panoramic, Hills, Coastline, Pool**

Association: **1**

Senior Community: **0**

Stories: **42**

✓ Pet Policy: **Breed restrictions, Number limit**

✓ Pool: **Heated, In ground, Community**

✓ Amenities: **Pet Rules, Controlled Access, Security, Hot Water, Concierge**

✓ Parking: **2.00**

✓ Parking: **Covered, Private, Unassigned**

Spa: **1**

✓ Fireplace: **Gas, Living room**

✓ Lot Features: **Landscaped**

✓ Fence: **Privacy**

✓ Security: **Fire and smoke detection system, Gated**

Listing ID:	225001919	community, Guarded, Card/code access, Carbon monoxide detector(s), Gated with guard, 24 hour security, Smoke Detector(s), Fire Sprinkler System
✓	Furnished:	Unfurnished
✓	Inclusions:	Access To Secure Temperature Regulated Wine Storage (community), In Unit Washer And Dryer. Tenant Will Have Full Access To On Site Amenities Including Pool, Fitness Center, Dog Park, And Children's Playroom.reservations Required For The Following Amenities Movie Theater, Banquet Room, Business Conference Center, Studio, And Spa.
Entry Level:		15
✓	Laundry:	Inside
✓	Room Type:	Great Room, Exercise Room, Two Primaries
✓	Flooring:	Wood
✓	Window Features:	Double Pane Windows, Custom Covering
✓	Entry Location:	Elevator
✓	Spa Construction:	In Ground
✓	Interior Features:	Balcony, Track Lighting, Elevator
✓	Heating System:	Central
✓	Cooling System:	Central Air
✓	Sewer:	Public Sewer, Sewer Paid
✓	Appliances:	Dishwasher, Disposal, Microwave, Refrigerator, Gas Cooking

MLS [Addon](#)

Zoning:	LAC2
Parcel Number:	4319017071
Lot Size Square Feet:	161,429 Sqft
✓ Exclusions:	Any Furniture Present, Detached Storage Unit.
TaxAnnualAmount:	\$0
Association Fee:	\$3,000
✓ RoomKitchenFeatures:	Stone Counters
✓ RoomBathroomFeatures:	Shower, Separate Tub And Shower, Granite Counters
Garage Spaces:	2
High School:	Arlington
High School 2:	Arling
Middle Or Junior School:	Miller
High School District:	Los Angeles Unified
Levels:	One
✓ EatingArea:	Dining Room, Breakfast Counter / Bar
Taxes:	\$0
Guest House SqFt:	0 Sqft
Approx Lot SqFt:	0 Sqft
✓ Special Listing Conditions:	Standard

Agent [Info](#)



Rina Maya

☎ 858-876-7946

☎ 800-878-0907

✉ Questions@unitedbrokersinc.net
