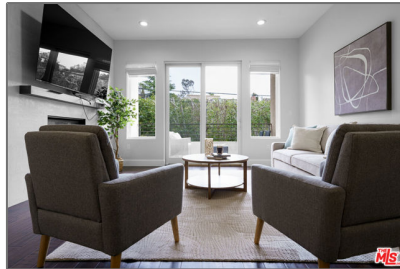


Residential For Sale

1,641 Sqft - 1318 Roxbury Drive, Los Angeles, California, 90035



Basic Details

Status:	Active
Listing Type:	For Sale
Property Type:	Residential
Property SubType:	Condominium
Price:	\$1,400,000
Price Per Square Foot:	\$853
Square Footage:	1,641 Sqft
Lot Area:	0.72 Sqft
Year Built:	2008
View:	Mountain(s)
Bedrooms:	2
Bathrooms:	3
Bathrooms (Full):	3
Country:	US
State:	California
County:	Los Angeles
City:	Los Angeles
Zipcode:	90035
Listing ID:	25527011

Features

Association:	1
Senior Community:	0
Stories:	3
✓ Amenities:	Picnic Area, Controlled Access, Security, Hot Water, Insurance, Concierge, Earthquake Insurance
AttachedGarage :	1
✓ Parking:	2.00
✓ Parking:	Gated, Garage Door Opener, Garage, Tandem Garage, Covered, Parking Space, Controlled Entrance, Assigned, Community Structure, Subterranean
✓ Fireplace:	Living room
✓ Lot Features:	Landscaped, Corners Marked
✓ Security:	Automatic gate, Fire and smoke detection system, Gated community, Guarded, Card/code access, Carbon monoxide detector(s), Gated with guard, 24 hour security, Smoke Detector(s), Fire

		Sprinkler System
✓	Inclusions:	At No Value Or Seller Warranty.
Entry Level: 1		
✓	Laundry:	Individual Room, Inside, Dryer Included, Washer Included
✓	Room Type:	Living Room, Walk-in Closet, Entry
✓	Flooring:	Wood, Carpet
✓	Window Features:	Double Pane Windows
✓	Entry Location:	Lower Level
✓	Property Condition:	Updated/remodeled
✓	Interior Features:	High Ceilings, Recessed Lighting, Living Room Balcony, Track Lighting
✓	Heating System:	Central
✓	Cooling System:	Central Air
✓	Water Source:	Public
✓	Sewer:	Sewer Paid
✓	Appliances:	Dishwasher, Disposal, Electric Oven, Microwave, Refrigerator, Gas Cooktop, Range Hood, Vented Exhaust Fan, Range, Built-in

MLS Addon

Association Fee Frequency:	Monthly
Zoning:	LAR3
Parcel Number:	4330013107
Lot Size Square Feet:	31,274 Sqft
TaxAnnualAmount:	\$0

Association Fee: **\$1,434**

✓ RoomKitchenFeatures: [Remodeled Kitchen](#)

✓ RoomBathroomFeatures: [Shower, Granite Counters, Remodeled, Low Flow Toilet\(s\)](#)

Garage Spaces: **2**

High School: **Arlington**

High School 2: **Arling**

Middle Or Junior School: **Miller**

Levels: **One**

✓ EatingArea: [Dining Room, In Living Room](#)

Taxes: **\$0**

Guest House SqFt: **0 Sqft**

Approx Lot SqFt: **0 Sqft**

✓ Special Listing Conditions: [Standard](#)

Virtual Tour [Click Here](#)
URL Unbranded:

Agent [Info](#)



Rina Maya
☎ 858-876-7946
☎ 800-878-0907
✉ Questions@unitedbrokersinc.net