

Manufactured In Park For Sale

980 Sqft - 2550 Pacific Coast HWY, Torrance, California, 90505



Basic [Details](#)

Status: **Active**

Listing Type: **For Sale**

Property Type: **Manufactured In Park**

Price: **\$280,000**

Price Per Square Foot: **\$286**

Square Footage: **980 Sqft**

Year Built: **2005**

View: **Mountain(s)**

Bedrooms: **2**

Bathrooms: **2**

Bathrooms (Full): **2**

Country: **US**

State: **California**

County: **Los Angeles**

City: **Torrance**

Zipcode: **90505**

Listing ID: **SB25086456**

Features

Association: **0**

Senior Community: **0**

Stories: **1**

✓ Community Features: [Dog Park](#)

✓ Pool: [Community](#)

✓ Parking: [0.00](#)

✓ Lot Features: [Gentle Sloping](#)

Entry Level: **1**

✓ Laundry: [Gas Dryer Hookup, Inside, Washer Hookup](#)

✓ Entry Location

✓ Cooling System: [Central Air](#)

✓ Water Source: [Public](#)

✓ Sewer: [Public Sewer](#)

MLS [Addon](#)

Parcel Number: **8950675111**

☒ Exclusions: [Tv](#)

TaxAnnualAmount: **\$0**

High School: **Arlington**

High School 2: **Arling**

Middle Or Junior School: **Miller**

High School District: **Torrance Unified**

Levels: **One**

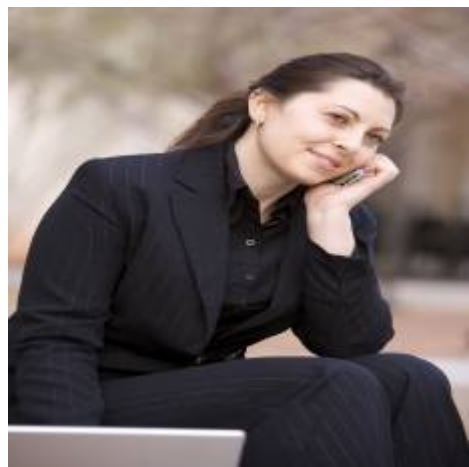
Taxes: **\$0**

Guest House SqFt: **0**

Approx Lot SqFt: **0**

☒ Special Listing Conditions: [Standard](#)

Agent [Info](#)



Rina Maya
 858-876-7946
 800-878-0907
 Questions@unitedbrokersinc.net