

Residential Rent For Rent

952 Sqft - 2253 Martin, Irvine, California, 92612



Basic Details

Status: **Active**

Listing Type: **For Rent**

Property Type: **Residential Rent**

Property SubType: **Condominium**

Price: **\$2,995**

Price Per Square Foot: **\$3**

Square Footage: **952 Sqft**

Year Built: **1993**

View: **Mountain(s)**

Bedrooms: **1**

Bathrooms: **1**

Bathrooms (Full): **1**

Country: **US**

State: **California**

County: **Orange**

City: **Irvine**

Zipcode: **92612**

Listing ID: **OC25085267**

Features

✓ View: **Park/greenbelt**

Association: **1**

Senior Community: **0**

✓ Common Walls: **2+ Common Walls**

Stories: **1**

✓ Pet Policy: **Call, Breed restrictions, Size limit, Number limit**

✓ Community Features: **Sidewalks, Street Lights**

✓ Pool: **Association, Community**

✓ Amenities: **Pool, Spa/hot Tub, Clubhouse, Gym/ex Room**

AttachedGarage: **0**

✓ Parking: **2.00**

✓ Parking: **Assigned, Community Structure, Subterranean**

Spa: **1**

✓ Security: **Carbon monoxide detector(s), Smoke Detector(s), Gated With Attendant**

✓ Patio: **Covered**

✓	Furnished:	Unfurnished
✓	Inclusions:	Refrigerator, Washer, Dryer
Entry Level:		1
✓	Laundry:	Stackable, In Kitchen, In Closet
✓	Room Type:	Office, Walk-in Closet, Laundry, Den, Main Floor Primary Bedroom
✓	Window Features:	Double Pane Windows
✓	Entry Location:	Street
✓	Spa Construction:	Community, Association
✓	Property Condition:	Turnkey
✓	Interior Features:	Open Floorplan, Granite Counters, Living Room Balcony, Unfurnished
Main Level Bathrooms:		1
Main Level Bedrooms:		1
✓	Heating System:	Central
✓	Cooling System:	Central Air
✓	Water Source:	Public
✓	Sewer:	Sewer Paid
✓	Appliances:	Dishwasher, Microwave, Refrigerator, Electric Range

MLS Addon

Association Fee Frequency: **Monthly**

Parcel Number: **93713537**

TaxAnnualAmount: **\$0**

Association Fee: **\$680**

✓	RoomKitchenFeatures:	Granite Counters, Kitchen Open To Family Room
✓	RoomBathroomFeatures:	Separate Tub And Shower, Soaking Tub, Granite Counters

Garage Spaces: **2**

High School: **Arlington**

High School 2: **Arling**

Middle Or Junior School: **Miller**

High School District: **Santa Ana Unified**

Levels: **One**

✓	EatingArea:	Breakfast Counter / Bar, Dining Ell
---	-------------	-------------------------------------

Lease Term : **12 Months**

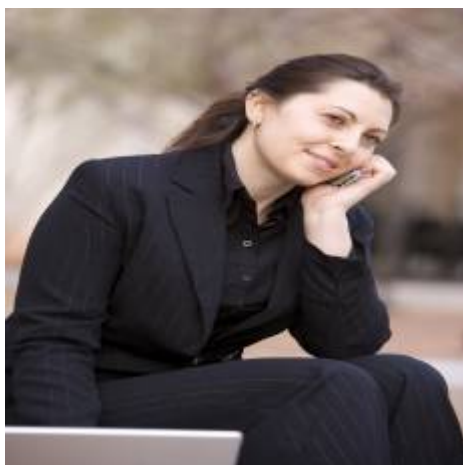
Taxes: **\$0**

Guest House SqFt: **0 Sqft**

Approx Lot SqFt: **0 Sqft**

✓	Special Listing Conditions:	Standard
---	-----------------------------	----------

Agent [Info](#)



Rina Maya

☎ 858-876-7946

☎ 800-878-0907

✉ Questions@unitedbrokersinc.net