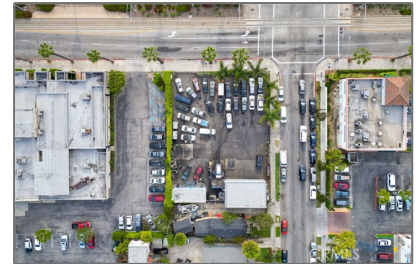
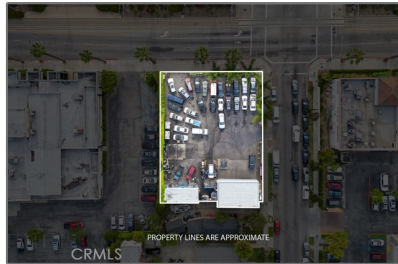


# Commercial For Sale

1,403 Sqft - 1990 Long Beach Boulevard, Long Beach, California, 90806



## Basic Details

Status:	Active
Listing Type:	For Sale
Property Type:	Commercial
Property SubType:	Retail
Price:	\$1,199,000
Price Per Square Foot:	\$855
Square Footage:	1,403 Sqft
Year Built:	1952
View:	Mountain(s)
Bathrooms:	2
Country:	US
State:	California
County:	Los Angeles
City:	Long Beach
Zipcode:	90806
Listing ID:	DW25077689

## MLS Addon

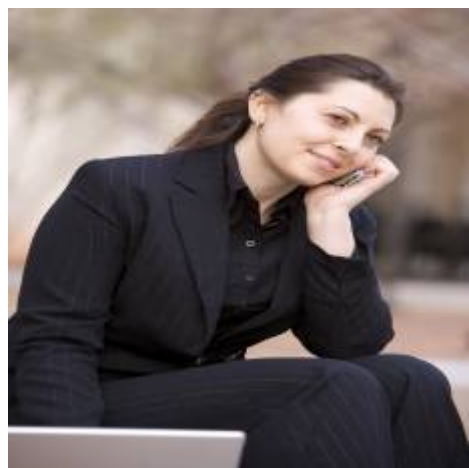
Parcel Number: 7209010001

## Features

Association:	0
Senior Community:	0
✓ Common Walls:	No Common Walls
Stories:	1
✓ Community Features:	Sidewalks
AttachedGarage :	1
✓ Parking:	Garage
✓ Lot Features:	Front Yard, Lawn
Entry Level:	1
✓ Entry Location:	Steps From The Street
Main Level Bathrooms:	2
Main Level Bedrooms:	3
✓ Sewer:	Public Sewer

Lot Size Square Feet:	6,903 Sqft
TaxAnnualAmount:	\$0
TaxYear:	0
High School:	Arlington
High School 2:	Arling
Middle Or Junior School:	Miller
High School District:	Los Angeles Unified
Levels:	One
Taxes:	\$0
Guest House SqFt:	0 Sqft
Approx Lot SqFt:	0 Sqft
<div>✓</div> Special Listing Conditions:	Standard

Agent [Info](#)



Rina Maya  
☎ 858-876-7946  
☎ 800-878-0907  
✉ [Questions@unitedbrokersinc.net](mailto:Questions@unitedbrokersinc.net)