

Residential For Sale

3,293 Sqft - 16 Lucerne, Newport Beach,
California, 92660



Basic Details

Status:	Active
Listing Type:	For Sale
Property Type:	Residential
Property SubType:	Condominium
Price:	\$3,290,000
Price Per Square Foot:	\$999
Square Footage:	3,293 Sqft
Year Built:	1978
View:	Mountain(s)
Bedrooms:	4
Bathrooms:	4
Bathrooms (Full):	3
Bathrooms (1/2):	1
Country:	US
State:	California
County:	Orange
City:	Newport Beach
Zipcode:	92660
Listing ID:	PW25015663

Features

✓ View:	City Lights, Canyon, Water, Reservoir
Association:	1
Senior Community:	0
✓ Common Walls:	1 Common Wall
Stories:	2
✓ Community Features:	Sidewalks, Street Lights, Park, Dog Park, Gutters
✓ Pool:	Association, Community
✓ Amenities:	Pool, Spa/hot Tub, Tennis Court(s), Picnic Area, Dog Park, Insurance, Pest Control, Earthquake Insurance
AttachedGarage :	1
✓ Parking:	3.00
✓ Parking:	Driveway, Direct Garage Access, Paved, Garage Door Opener, Garage - Two Door, Concrete, Garage Faces Front, Oversized
Spa:	1
✓ Fireplace:	Living room, Family

		room, Primary Bedroom
✓	Lot Features:	Front Yard, Cul-de-sac, Sprinkler System, Paved, Sprinklers On Side, Sprinklers In Front, Sprinklers Timer, Walkstreet
✓	Fence:	Cross fenced, Glass, Security
✓	Security:	Fire and smoke detection system, Gated community, Guarded, Carbon monoxide detector(s), Gated with guard, Security lights, 24 hour security, Smoke Detector(s), Gated With Attendant
✓	Patio:	Deck, Wood
✓	Inclusions:	Stoves

Entry Level:

1

✓	Laundry:	Individual Room, Inside, Gas & Electric Dryer Hookup
✓	Room Type:	Family Room, Formal Entry, Living Room, Loft, Walk-in Closet, Kitchen, Laundry, Main Floor Bedroom, Entry, Jack & Jill, Primary Suite
✓	Roofing:	Shake, Slate
✓	Flooring:	Wood
✓	Window Features:	Double Pane Windows, Shutters, Skylight(s)
✓	Entry Location:	Front
✓	Spa Construction:	Community, Association
✓	Property Condition:	Updated/remodeled
✓	Foundation Details:	Concrete Perimeter
✓	Exterior Features:	Lighting, Rain Gutters
✓	Interior Features:	Open Floorplan, Recessed Lighting,

		Balcony, Cathedral Ceiling(s), Quartz Counters
Main Level Bathrooms:	2	
Main Level Bedrooms:	1	
✓ Heating System:	Central	
✓ Cooling System:	Central Air	
✓ Utilities:	Electricity Connected, Natural Gas Connected, Cable Connected	
✓ Water Source:	Public	
✓ Sewer:	Public Sewer	
✓ Appliances:	Dishwasher, Gas & Electric Range, Gas Range, Microwave, Refrigerator, Gas Oven, Water Softener	
✓ Accessibility Features:	Doors - Swing In, Parking	

MLS Addon

Association Fee Frequency:	Monthly	
Parcel Number:	93645028	
✓ Exclusions:	Black Fridge In The Adu	
TaxAnnualAmount:	\$0	
Association Fee 2:	\$460	
Association Fee:	\$745	
Association Fee 2 Frequency:	Monthly	
✓ RoomKitchenFeatures:	Kitchen Island, Quartz Counters, Remodeled Kitchen, Kitchen Open To Family Room	
✓ RoomBathroomFeatures:	Shower, Bathtub, Walk-in Shower, Granite	

Counters, Remodeled,
Upgraded, Shower In
Tub, Double Sinks In
Bath(s), Quartz Counters,
Main Floor Full Bath,
Double Sinks In Primary
Bath

Garage Spaces: **3**

High School: **Arlington**

High School 2: **Arling**

Middle Or Junior
School: **Miller**

High School
District: **Newport Mesa
Unified**

Levels: **Two**



EatingArea:

Dining Room, In Kitchen,
Breakfast Counter / Bar,
Family Kitchen, In Family
Room

Taxes: **\$0**

Guest House
SqFt: **0 Sqft**

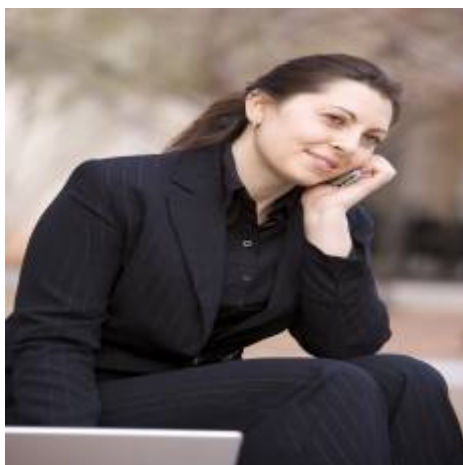
Approx Lot SqFt: **0 Sqft**



Special Listing
Conditions:

Standard

Agent [Info](#)



Rina Maya

858-876-7946

800-878-0907

Questions@unitedbrokersinc.net