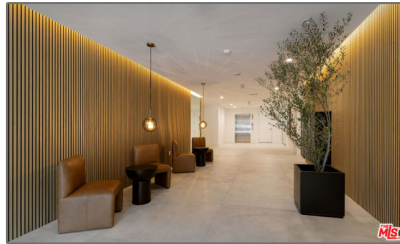


Residential For Sale

2,036 Sqft - 3649 RegalPlace, Los Angeles,
California, 90068



Basic Details

Status:	Active
Listing Type:	For Sale
Property Type:	Residential
Property SubType:	Condominium
Price:	\$1,600,000
Price Per Square Foot:	\$786
Square Footage:	2,036 Sqft
Lot Area:	0.64 Sqft
Year Built:	2024
View:	Mountain(s)
Bedrooms:	3
Bathrooms:	4
Bathrooms (Full):	3
Bathrooms (1/2):	1
Country:	US
State:	California
County:	Los Angeles
City:	Los Angeles
Zipcode:	90068

Features


✓ View:	City Lights, Hills, Valley
Association:	1
Senior Community:	0
Stories:	5
✓ Amenities:	Recreation Room
✓ Parking:	2.00
✓ Parking:	Side By Side
Spa:	0
✓ Security:	Automatic gate, Fire and smoke detection system, Gated community, Card/code access, 24 hour security, Fire Sprinkler System
Entry Level:	2
✓ Laundry:	Dryer Included, Washer Included
✓ Room Type:	Living Room
✓ Entry Location:	Elevator
✓ Heating System:	Central
✓ Cooling System:	Central Air

Listing ID:	25507495	✓ Appliances:	Dishwasher, Disposal, Refrigerator
		✓ Accessibility Features:	Customized Wheelchair Accessible, Other

MLS [Addon](#)

Association Fee Frequency:	Monthly
Parcel Number:	UNAVAILABLE
Lot Size Square Feet:	28,000 Sqft
TaxAnnualAmount:	\$0
Association Fee:	\$887
High School:	Arlington
High School 2:	Arling
Middle Or Junior School:	Miller
Levels:	One
Taxes:	\$0
Guest House SqFt:	0 Sqft
Approx Lot SqFt:	0 Sqft
✓ Special Listing Conditions:	Standard

Agent [Info](#)



Rina Maya

858-876-7946

800-878-0907

Questions@unitedbrokersinc.net

