

# Residential For Sale

3,445 Sqft - 6085 Woodfern Drive, Rancho Palos Verdes, California, 90275



## Basic Details

Status:	Active
Listing Type:	For Sale
Property Type:	Residential
Property SubType:	Single Family Residence
Price:	\$3,650,000
Price Per Square Foot:	\$1,060
Square Footage:	3,445 Sqft
Lot Area:	0.23 Sqft
Year Built:	1964
View:	Mountain(s)
Bedrooms:	4
Bathrooms:	4
Bathrooms (Full):	2
Bathrooms (1/2):	1
Bathrooms (3/4):	1
Country:	US
State:	California
County:	Los Angeles
City:	Rancho Palos

## Features

✓ View:	City Lights, Ocean, Panoramic, Coastline, Water, White Water
Association:	0
Senior Community:	0
✓ Common Walls:	No Common Walls
Stories:	2
✓ Community Features:	Golf, Suburban, Hiking, Watersports, Preserve/public Land, Horse Trails, Stable(s), Dog Park, Storm Drains
Attached Garage :	1
✓ Parking:	3.00
✓ Parking:	Driveway, Direct Garage Access, Garage Door Opener, Garage - Two Door, Garage, Garage Faces Side, Driveway Level, Workshop In Garage, Concrete, Rv Access/parking, Oversized, Electric Vehicle Charging Station(s)
Spa:	0
✓ Fireplace:	

Verdes		Living room	
Zipcode:	90275	✓	Lot Features:
Listing ID:	PV25004537	Front Yard, Cul-de-sac, Park Nearby, 0-1 Unit/acre, Sprinkler System, Lot 10000-19999 Sqft, Landscaped, Sprinklers Drip System, Level With Street, Rectangular Lot, Yard, Sprinklers On Side, Gentle Sloping, Garden, Sprinklers In Rear, Up Slope From Street, Sprinklers In Front, Sprinklers Timer, Sloped Down, Utilities - Overhead	
		✓	Fence:
		Stucco wall, Excellent condition, New condition	
		✓	Security:
		Fire and smoke detection system, Carbon monoxide detector(s)	
		✓	Patio:
		Deck, Wood, Tile	
Entry Level:		1	
		✓	Laundry:
		Gas Dryer Hookup, Individual Room, Inside, Washer Hookup, Dryer Included, Washer Included	
		✓	Room Type:
		Family Room, Formal Entry, Living Room, Office, Walk-in Closet, Kitchen, Laundry, Workshop, Great Room, Walk-in Pantry, Den, Entry, Center Hall, Foyer, Main Floor Primary Bedroom	
		✓	Roofing:
		Rolled/hot mop, Flat	
		✓	Flooring:
		Wood, Carpet, Tile	
		✓	Window Features:
		Double Pane Windows, Plantation Shutters, Wood Frames, Casement Windows	
		✓	Entry Location
		✓	Property Condition:
		Updated/remodeled, Termite Clearance	

✓	Foundation Details:	Slab
✓	Exterior Features:	Barbecue Private, Rain Gutters, Sump Pump
✓	Interior Features:	High Ceilings, Open Floorplan, Pantry, Recessed Lighting, Balcony, Ceiling Fan(s), Living Room Balcony, Copper Plumbing Partial, 2 Staircases, Block Walls, Quartz Counters

Main Level  
Bathrooms: **2**

Main Level  
Bedrooms: **1**

✓	Heating System:	Central, Forced air, Fireplace(s)
✓	Cooling System:	Gas, Central Air
✓	Utilities:	Sewer Connected, Water Connected, Electricity Connected, Natural Gas Connected, Phone Connected, Underground Utilities, Cable Connected
✓	Water Source:	Public
✓	Sewer:	Public Sewer
✓	Appliances:	Dishwasher, Disposal, Double Oven, 6 Burner Stove, Energy Star Qualified Water Heater, Gas Range, Gas Water Heater, Microwave, Refrigerator, Tankless Water Heater, Gas Oven, Barbecue, Self Cleaning Oven, Convection Oven, Range Hood, Water Line To Refrigerator, Vented Exhaust Fan, Ice Maker, Free-standing Range, Freezer, Water Heater
✓	Accessibility Features:	2+ Access Exits, 32 Inch Or More Wide Doors, Low Pile Carpeting, 36 Inch Or More Wide Halls, 48 Inch Or More Wide Halls

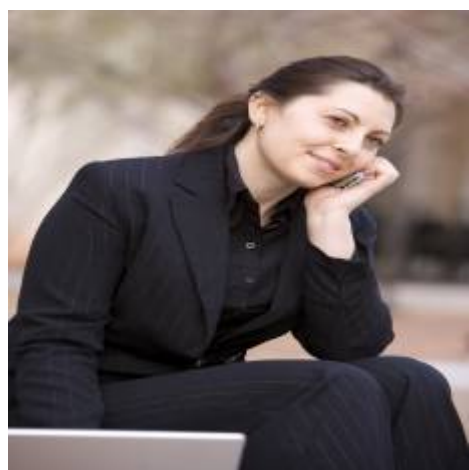
MLS [Addon](#)

Zoning:	<b>RPRS8000*</b>	
Parcel Number:	<b>7578001017</b>	
Lot Size Square Feet:	<b>9,847</b>	
TaxAnnualAmount:	<b>\$0</b>	
✓ RoomKitchenFeatures:	Kitchen Island, Pots & Pan Drawers, Remodeled Kitchen, Kitchen Open To Family Room, Self-closing Drawers, Walk-in Pantry, Utility Sink, Corian Counters	
✓ RoomBathroomFeatures:	Shower, Bathtub, Closet In Bathroom, Separate Tub And Shower, Exhaust Fan(s), Linen Closet/storage, Remodeled, Upgraded, Shower In Tub, Double Sinks In Bath(s), Jetted Tub, Low Flow Shower, Low Flow Toilet(s), Privacy Toilet Door, Heated Floor, Quartz Counters, Main Floor Full Bath, Double Sinks In Primary Bath	
Garage Spaces:	<b>3</b>	
High School:	<b>Palos Verdes Peninsula</b>	
High School 2:	<b>Pavepe</b>	
Middle Or Junior School:	<b>Palos Verdes</b>	
Elementary School:	<b>Monte Malaga</b>	
High School District:	<b>Palos Verdes Peninsula Unified</b>	
Levels:	<b>Two</b>	
✓ EatingArea:	Dining Room, In Kitchen, Breakfast Counter / Bar, Family Kitchen	
Taxes:	<b>\$0</b>	

Guest House SqFt:	0
Approx Lot SqFt:	0
<div>✓</div> Special Listing Conditions:	Standard

Agent [Info](#)

---



Rina Maya  
☎ 858-876-7946  
☎ 800-878-0907  
✉ [Questions@unitedbrokersinc.net](mailto:Questions@unitedbrokersinc.net)

-

---