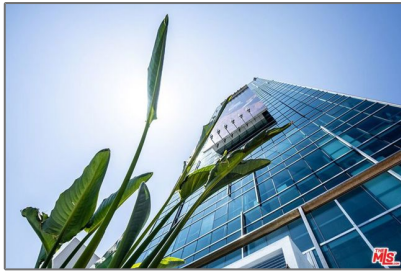


Residential Rent For Rent

1,217 Sqft - 1480 VINE Street, Los Angeles,
California, 90028



Basic Details

Status: **Active**

Listing Type: **For Rent**

Property Type: **Residential Rent**

Property SubType: **Condominium**

Price: **\$4,745**

Price Per Square Foot: **\$4**

Square Footage: **1,217 Sqft**

Lot Area: **0.66 Sqft**

Year Built: **2010**

View: **Mountain(s)**

Bedrooms: **1**

Bathrooms: **2**

Bathrooms (Full): **2**

Country: **US**

State: **California**

County: **Los Angeles**

City: **Los Angeles**

Zipcode: **90028**

Features

✓ View: **City Lights**

Association: **0**

Senior Community: **0**

Stories: **1**

✓ Pet Policy: **Call**

✓ Pool: **Community**

✓ Parking

✓ Parking: **Valet, Subterranean**

Spa: **1**

✓ Security: **Fire and smoke detection system, Card/code access, Carbon monoxide detector(s), Gated with guard, 24 hour security, Fire Sprinkler System**

✓ Furnished: **Unfurnished**

Entry Level: **2**

✓ Laundry: **Dryer Included, Washer Included**

✓ Room Type: **Loft**

✓ Flooring: **Wood, Laminate**

Listing ID:	25536395	✓	Window Features:	Double Pane Windows, Custom Covering
		✓	Spa Construction:	Community
		✓	Interior Features:	High Ceilings, Open Floorplan
		✓	Heating System:	Central
		✓	Cooling System:	Central Air
		✓	Appliances:	Dishwasher, Disposal, Microwave, Refrigerator

MLS [Addon](#)

Zoning:	LAC4
Parcel Number:	5546025029
Lot Size Square Feet:	28,770 Sqft
TaxAnnualAmount:	\$0
✓ RoomKitchenFeatures:	Stone Counters
High School:	Arlington
High School 2:	Arling
Middle Or Junior School:	Miller
Levels:	One
✓ EatingArea:	Dining Room, In Living Room
Lease Term :	12 Months
Taxes:	\$0
Guest House SqFt:	0 Sqft
Approx Lot SqFt:	0 Sqft

Agent [Info](#)



Rina Maya

☎ 858-876-7946

☎ 800-878-0907

✉ Questions@unitedbrokersinc.net
