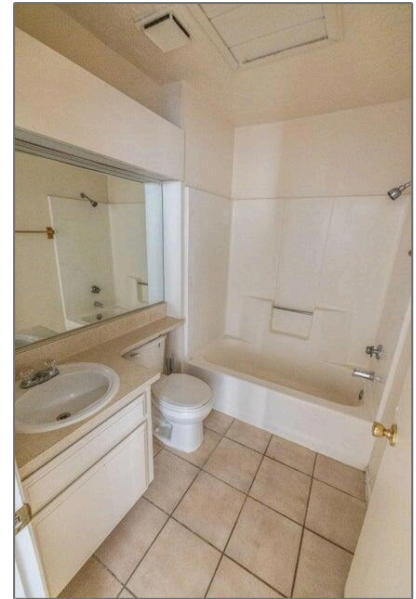


Residential For Sale

801 Sqft - 27160 VistaRoad, Helendale, California,
92342



Basic [Details](#)

Status:	Active
Listing Type:	For Sale
Property Type:	Residential
Property SubType:	Condominium
Price:	\$197,000
Price Per Square Foot:	\$246
Square Footage:	801 Sqft
Lot Area:	0.04 Sqft
Year Built:	1986
View:	Mountain(s)
Bedrooms:	2
Bathrooms:	2
Bathrooms (Full):	2
Country:	US

Features

Association:	1
Senior Community:	0
Stories:	1
✓ Pool:	In ground, Community
✓ Amenities:	Gym/ex Room
AttachedGarage :	0
✓ Parking:	4.00
✓ Parking:	Detached Carport
Spa:	0
✓ Room Type:	Living Room
✓ Flooring:	Tile
✓ Spa Construction:	Community, In Ground
✓ Foundation Details:	Slab

State:	California
County:	San Bernardino
City:	Helendale
Zipcode:	92342
Listing ID:	219129743DA

✓	Heating System:	Central
✓	Cooling System:	Central Air

MLS [Addon](#)

Association Fee Frequency:	Monthly
Parcel Number:	0467761220000
Lot Size Square Feet:	1,764
TaxAnnualAmount:	\$0
Association Fee:	\$225
High School:	Arlington
High School 2:	Arling
Middle Or Junior School:	Miller
Levels:	One
Taxes:	\$0
Guest House SqFt:	0
Approx Lot SqFt:	0
✓ Special Listing Conditions:	Standard

Agent [Info](#)



Rina Maya
 ☎ 858-876-7946
 ☎ 800-878-0907
 ✉ Questions@unitedbrokersinc.net

