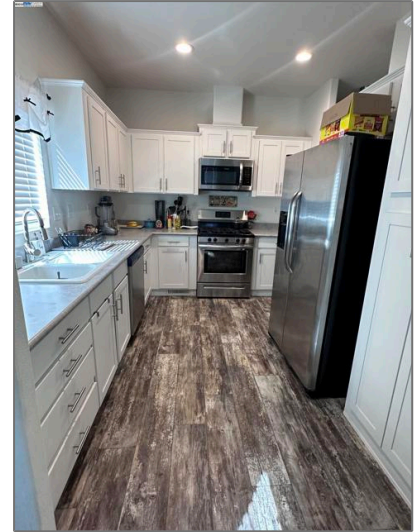


Manufactured In Park For Sale

- 16711 Marsh Creek Rd #122, Clayton, California, 94517



Basic Details

Status:	Active
Listing Type:	For Sale
Property Type:	Manufactured In Park
Price:	\$170,000
Price Per Square Foot:	\$217
Lot Area:	0.02 Sqft
View:	Mountain(s)
Bedrooms:	2
Bathrooms:	2
Bathrooms (Full):	2
State:	California
County:	Contra Costa
City:	Clayton
Zipcode:	94517

Features

✓	Common Walls:	No Common Walls
✓	Pet Policy	
✓	Pool:	In ground, Community
✓	Parking:	0.00
✓	Parking:	Carport
✓	Lot Features:	Level With Street
✓	Patio:	Front Porch
✓	Flooring:	Vinyl
Main Level Bathrooms:		2
Main Level Bedrooms:		4
✓	Heating System:	Forced air
✓	Water Source:	Other
✓	Sewer:	

MLS [Addon](#)

Parcel Number:	7007191229
Lot Size Square Feet:	784 Sqft
TaxAnnualAmount:	\$0
High School:	Arlington
High School 2:	Arling
Middle Or Junior School:	Miller
Taxes:	\$0
Guest House SqFt:	0 Sqft
Approx Lot SqFt:	0 Sqft

Agent [Info](#)



Rina Maya

 858-876-7946

 800-878-0907

 Questions@unitedbrokersinc.net