

# Residential For Sale

1,223 Sqft - 4676 MaxwellCourt, Riverside,  
California, 92501



## Basic Details

Status:	Active
Listing Type:	For Sale
Property Type:	Residential
Property SubType:	Condominium
Price:	\$413,000
Price Per Square Foot:	\$338
Square Footage:	1,223 Sqft
Lot Area:	0.01 Sqft
Year Built:	1975
View:	Mountain(s)
Bedrooms:	2
Bathrooms:	2
Bathrooms (Full):	1
Bathrooms (1/2):	1
Country:	US

## Features

✓ View:	City Lights, Mountain(s), Neighborhood, Pool
Association:	1
Senior Community:	0
✓ Common Walls:	1 Common Wall
Stories:	3
✓ Community Features:	Sidewalks, Street Lights, Suburban, Hiking, Park
✓ Pool:	Fenced, In ground, Association
✓ Amenities:	Pool
AttachedGarage :	1
✓ Parking:	2.00
✓ Parking:	Garage - Single Door, Garage Faces Rear
Spa:	0

State:	California	✓	Fireplace:	Gas starter
County:	Riverside	✓	Lot Features:	Cul-de-sac, Park Nearby, 0-1 Unit/acre, Landscaped
City:	Riverside			
Zipcode:	92501	✓	Security:	Carbon monoxide detector(s), Smoke Detector(s)
Listing ID:	IV25106924	✓	Patio:	Deck
		✓	Inclusions:	Refrigerator, Stove, Microwave, Dishwasher
Entry Level:		2		
		✓	Laundry:	In Garage
		✓	Room Type:	Living Room, All Bedrooms Up, Jack & Jill
		✓	Flooring:	Carpet, Tile
		✓	Window Features:	Double Pane Windows, Screens, Energy Star Qualified Windows, Insulated Windows
		✓	Entry Location:	Living Room
		✓	Property Condition:	Updated/remodeled
		✓	Foundation Details:	Concrete Perimeter
		✓	Interior Features:	Open Floorplan, Pantry, Balcony, Ceiling Fan(s), Living Room Balcony, Unfurnished, 2 Staircases, Quartz Counters
Main Level		1		
Bathrooms:				
		✓	Heating System:	Central
		✓	Cooling System:	Central Air
		✓	Utilities:	Electricity Available, Natural Gas Available, Water Available, Water Connected, Cable Available, Electricity Connected, Natural Gas Connected, Phone Available

✓	Water Source:	Public
✓	Sewer:	Public Sewer
✓	Appliances:	Dishwasher, Disposal, Gas Range, Gas Water Heater, Microwave, Refrigerator, Gas Oven, Self Cleaning Oven, Water Line To Refrigerator, Ice Maker, Free-standing Range, Water Softener, Water Heater, Energy Star Qualified Appliances
✓	Accessibility Features:	Doors - Swing In, Parking, 2+ Access Exits

## MLS Addon

Association Fee Frequency: **Monthly**

Parcel Number: **217291033**

Lot Size Square Feet: **435**

✓ Exclusions: **Garage Freezer**

TaxAnnualAmount: **\$0**

Association Fee: **\$335**

✓ RoomKitchenFeatures: **Kitchen Island, Quartz Counters, Remodeled Kitchen, Kitchen Open To Family Room**

✓ RoomBathroomFeatures: **Shower, Walk-in Shower, Exhaust Fan(s), Vanity Area**

Garage Spaces: **2**

High School: **Arlington**

High School 2: **Arling**

Middle Or Junior School: **Miller**

High School District: **Riverbank Unified**

Levels: **Three Or More**

✓

EatingArea:

Area

Taxes:\$0

Guest House  
SqFt:0

Approx Lot SqFt:0

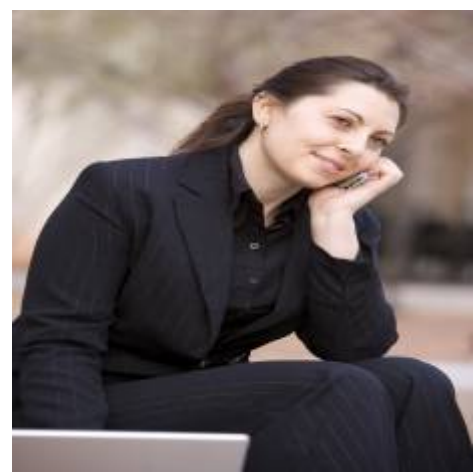
✓

Special Listing  
Conditions:

Standard

Agent [Info](#)

---



Rina Maya  
☎ 858-876-7946  
☎ 800-878-0907  
✉ [Questions@unitedbrokersinc.net](mailto:Questions@unitedbrokersinc.net)

---