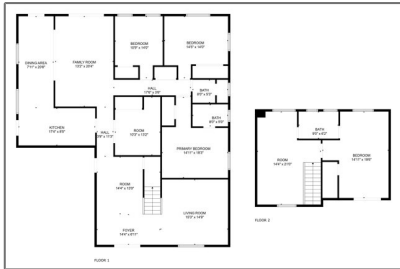


Residential For Sale

2,816 Sqft - 1049 GalateaStreet, Azusa, California,
91702



Basic Details

Status:	Active
Listing Type:	For Sale
Property Type:	Residential
Property SubType:	Single Family Residence
Price:	\$888,000
Price Per Square Foot:	\$315
Square Footage:	2,816 Sqft
Lot Area:	0.14 Sqft
Year Built:	1955
View:	Mountain(s)
Bedrooms:	4
Bathrooms:	3
Bathrooms (Full):	3
Country:	US
State:	California
County:	Los Angeles
City:	Azusa
Zipcode:	91702
Listing ID:	CV25114964

Features

✓ View:	Mountain(s), Peek-a-boo, See Remarks
Association:	0
Senior Community:	0
✓ Common Walls:	No Common Walls
Stories:	2
✓ Community Features:	Suburban, Curbs
AttachedGarage :	1
✓ Parking:	6.00
✓ Parking:	Driveway, Direct Garage Access, Garage - Single Door, Garage, Private, On Site, Garage Faces Front
Spa:	0
✓ Lot Features:	Front Yard, Landscaped, Yard, Lawn
✓ Fence:	Average condition, Masonry, Block
✓ Security:	Carbon monoxide detector(s), Smoke Detector(s)
✓ Patio:	Patio Open, Concrete,

		Rear Porch, Slab
✓	Electric:	Standard
Entry Level:		1
✓	Laundry:	Washer Hookup, Gas & Electric Dryer Hookup, In Garage
✓	Room Type:	Family Room, Living Room, Loft, Main Floor Bedroom, See Remarks, Jack & Jill, Foyer, Primary Suite, Primary Bathroom, Primary Bedroom
✓	Roofing:	Composition, Shingle
✓	Flooring:	Carpet, Tile, Laminate, Concrete
✓	Window Features:	Double Pane Windows, Screens
✓	Entry Location:	Front Door
✓	Property Condition:	Updated/remodeled, Additions/alterations, Building Permit
✓	Foundation Details:	Slab
✓	Interior Features:	Built-in Features, Crown Molding, Open Floorplan, In-law Floorplan, Balcony, Ceiling Fan(s), Copper Plumbing Partial, Block Walls
Main Level Bathrooms:		2
Main Level Bedrooms:		3
✓	Heating System:	Central, Forced air
✓	Cooling System:	Central Air
✓	Utilities:	Sewer Connected, Water Connected, Electricity Connected, Natural Gas Connected
✓	Water Source:	Public

✓	Sewer:	Unknown, Public Sewer
✓	Appliances:	Dishwasher, Gas Range, Gas Oven, Water Heater
✓	Accessibility Features:	Entry Slope Less Than 1 Foot

MLS Addon

Zoning:	AZR1CY	
Parcel Number:	8629007026	
Lot Size Square Feet:	5,901	
TaxAnnualAmount:	\$0	
✓ RoomKitchenFeatures:	Kitchen Open To Family Room, Utility Sink	
✓ RoomBathroomFeatures:	Shower, Bathtub, Walk-in Shower, Exhaust Fan(s), Shower In Tub, Main Floor Full Bath	
Garage Spaces:	2	
High School:	Arlington	
High School 2:	Arling	
Middle Or Junior School:	Miller	
High School District:	Azusa Unified	
Levels:	One,Two	
✓ EatingArea:	Area, Family Kitchen, In Family Room, In Living Room	
Taxes:	\$0	
Guest House SqFt:	0	
Approx Lot SqFt:	0	
✓ Special Listing Conditions:	Standard	



Rina Maya
☎ 858-876-7946
☎ 800-878-0907
✉ Questions@unitedbrokersinc.net