

Commercial For Sale

3,844 Sqft - 6280 AdobeRoad, 29 Palms,
California, 92277



Basic Details

Status:	Active
Listing Type:	For Sale
Property Type:	Commercial
Property SubType:	Retail
Price:	\$449,900
Price Per Square Foot:	\$117
Square Footage:	3,844 Sqft
Year Built:	1964
View:	Mountain(s)
Bathrooms:	2
Country:	US
State:	California
County:	San Bernardino
City:	29 Palms
Zipcode:	92277
Listing ID:	JT25127332

MLS Addon

Association Fee	Monthly
-----------------	---------

Features

Association:	1
Senior Community:	0
Stories:	1
✓ Amenities:	Pool, Spa/hot Tub, Clubhouse, Meeting Room, Fire Pit, Recreation Room, Pet Rules, Controlled Access, Security, Concierge
✓ Parking:	Gated, Assigned
Spa:	1
Entry Level:	1
✓ Flooring:	Wood
✓ Spa Construction:	Community, Heated
✓ Utilities:	Electricity Connected, Natural Gas Connected
✓ Water Source:	Public
✓ Appliances:	Dishwasher, Microwave, Refrigerator

Frequency:

Parcel Number:	0618252060000
----------------	---------------

Lot Size Square Feet:	36,291 Sqft
-----------------------	-------------

TaxAnnualAmount:	\$0
------------------	-----

TaxYear:	0
----------	---

Association Fee:	\$887
------------------	-------

High School:	Arlington
--------------	-----------

High School 2:	Arling
----------------	--------

Middle Or Junior School:	Miller
--------------------------	--------

Levels:	One
---------	-----

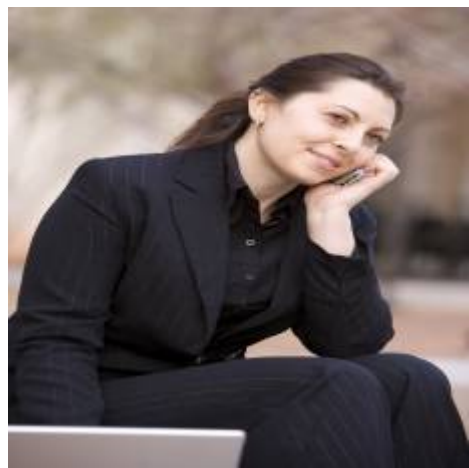
Taxes:	\$0
--------	-----

Guest House SqFt:	0 Sqft
-------------------	--------

Approx Lot SqFt:	0 Sqft
------------------	--------

<input checked="" type="checkbox"/> Special Listing Conditions:	Standard
---	----------

Agent [Info](#)



Rina Maya
☎ 858-876-7946
☎ 800-878-0907
✉ Questions@unitedbrokersinc.net
